

**ALAMEDA LOCAL AGENCY FORMATION COMMISSION
RESOLUTION NO. 2006-08**

**ADOPT A ZERO SPHERE OF INFLUENCE FOR THE
LIVERMORE-AMADOR VALLEY SEWER STUDY COUNTY SERVICE AREA**

WHEREAS, Government Code Section 56425 et seq. requires the Local Agency Formation Commission (LAFCo) to develop and determine the sphere of influence (SOI) of each local governmental agency within the County; and

WHEREAS, Government Code Section 56425(f) requires that LAFCo review and update the adopted SOI boundaries, as necessary, not less than once every five years; and

WHEREAS, Government Code Section 56430 requires that a municipal services review be conducted prior to or in conjunction with a SOI update; and

WHEREAS, LAFCo conducted a municipal services review of the services provided by the Sewer Study County Service Area (CSA) and adopted written determinations as required by Government Code Section 56430 on November 10, 2005; and

WHEREAS, the CSA's was formed in 1984 to conduct a study of wastewater disposal alternatives in the Livermore-Amador Valley, which it completed in 1987; and

WHEREAS, the boundary of the CSA includes all of Zone 7 of the Alameda County Flood Control and Water Conservation District except those areas that fall inside the corporate limits of Dublin, Fremont, Hayward, Union City, Pleasanton and Livermore; and

WHEREAS, LAFCo has not adopted a sphere of influence for the CSA; and

WHEREAS, the CSA has been inactive for nearly 20 years and does not provide any municipal services, and

WHEREAS it would be appropriate to adopt a zero SOI for this CSA

WHEREAS no change in regulation, land use or development will occur as a result of adopting a zero SOI for this CSA; and

WHEREAS, in the form and manner prescribed by law, the Executive Officer has given notice of a public hearing by this Commission regarding the location of this SOI map;

WHEREAS, the SOI action was duly considered at a public hearing held on January 12, 2006; and

WHEREAS, the Alameda LAFCo heard and received all oral and written protests, objections and evidence that were made, presented or filed, and all persons present were given an opportunity to appear and be heard with respect to any matter pertaining to said action.

NOW, THEREFORE, BE IT RESOLVED, DETERMINED AND ORDERED that the Alameda LAFCo hereby:

1. Adopt a zero SOI for the Livermore-Amador Valley Sewer Study CSA as generally depicted in Exhibit A attached hereto.

2. Adopt the following SOI policies:
 - Policy Recommendation #1: LAFCo to encourage the County to initiate dissolution of the CSA

3. Consider the criteria set forth in Government Code Section 56425(e) and determine as follows:
 - (a) *The present and planned land uses in the area, including agricultural and open-space lands* – The areas included with this SOI update do not affect agricultural lands. The CSA has no land authority, and no change to the present or planned uses will result from this SOI update.
 - (b) *The present and probable need for public facilities and services in the area* – Services are no longer being provided by this CSA. No changes in public facilities or services provided by the CSA will result from this SOI update.
 - (c) *The present capacity of public facilities and adequacy of public services that the agency provides or is authorized to provide* – The CSA was formed in 1984 to conduct a study of wastewater disposal alternatives in the Livermore-Amador Valley, which was completed in 1987. The CSA has been inactive for nearly 20 years and does not provide any municipal services.
 - (d) *The existence of any social or economic communities of interest in the area if the commission determines that they are relevant to the agency* - The CSA has been inactive for nearly 20 years and does not provide any municipal services. Adopting a zero SOI for this CSA will not affect the existence of any social or economic communities of interest in the area.
 - (e) *The existence of agricultural preserves or other important agricultural or open space land in the area which could be considered within an agency's SOI, and the effect on maintaining the physical and economic integrity of such resources in the event that such resources are within a SOI of a local governmental agency* – Although there is substantial agricultural and open space land within the CSA, the CSA provides no services. Adopting a zero SOI for the CSA will not adversely affect agricultural or open space land or be growth inducing.
 - (f) *Nature, location, extent, functions & classes of services to be provided* - The CSA currently provides no municipal services.

4. Determine, as lead agency for the purposes of the California Environmental Quality Act (CEQA), that the SOI update is categorically exempt under Section 15061(b)(3) of the CEQA Guidelines.

5. Direct staff to file a Notice of Exemption as lead agency under Section 15062 of the CEQA Guidelines.

* * * * *

This Resolution was approved and adopted by the Alameda Local Agency Formation Commission at a regular meeting held on January 12, 2006, at 7051 Dublin Boulevard in Dublin, California on the motion made by Commissioner Foulkes, seconded by Commissioner Hosterman, and duly carried.

Ayes: 6 (Commissioners Butler, Crowle, Foulkes, Hosterman, Lockhart and Miley)
 Noes: 0
 Excused: 3 (Commissioners Combs, Kamena and Steele)

/Robert Butler/

Robert Butler, Chair, Alameda LAFCo

Approved as to Form:

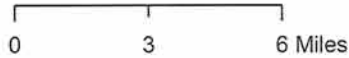
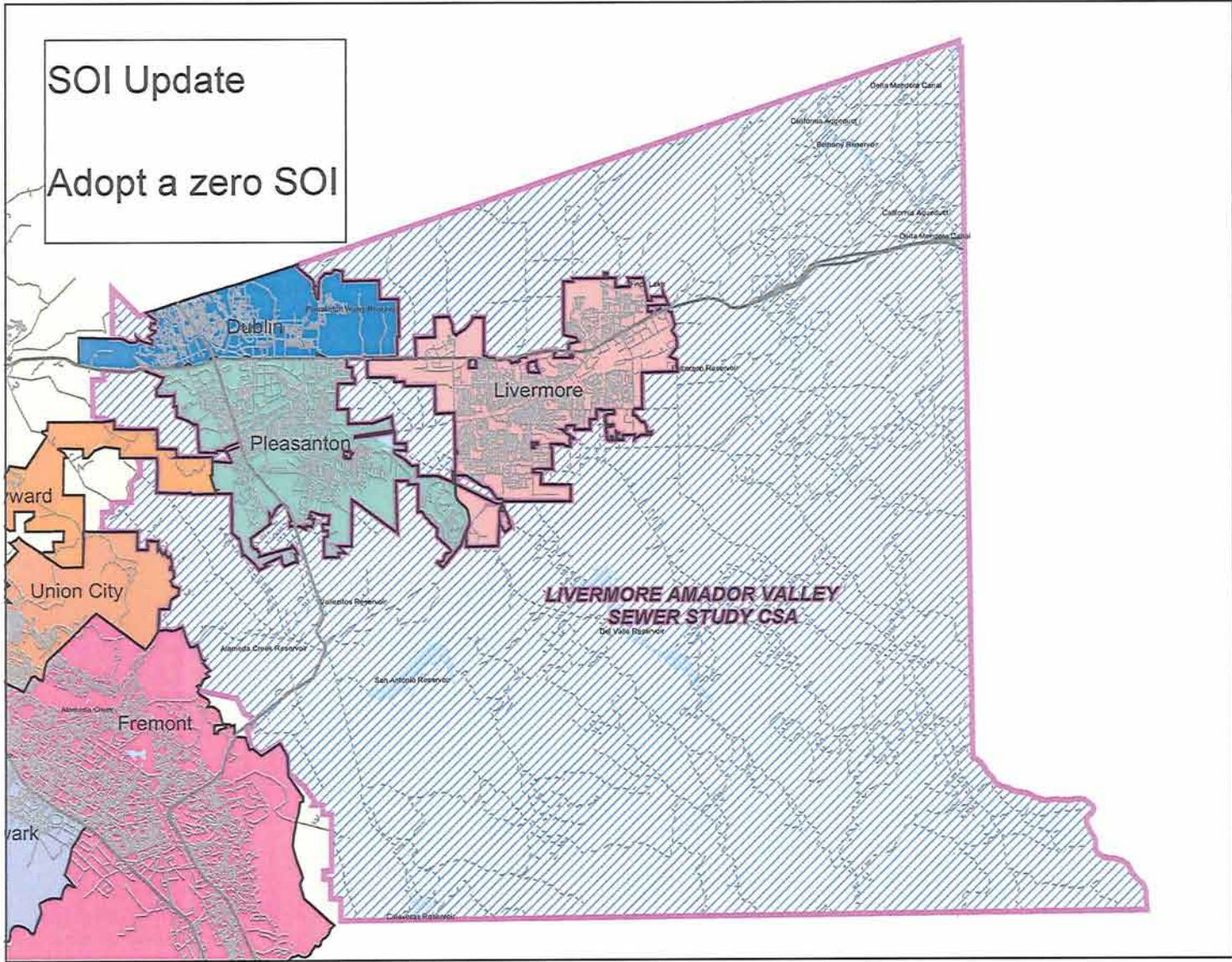
By: 
Brian Washington, LAFCo Legal Counsel

CERTIFICATION: I hereby certify that the foregoing is a correct copy of a resolution adopted by the Alameda Local Agency Formation Commission, Oakland, California.

Attest: 
Crystal Hishida Graff, LAFCo Executive Officer

Date: 2/2/06

LIVERMORE AMADOR VALLEY SEWER STUDY CSA



Legend

- Interstates
- Street
- Livermore Amador Valley CSA
- City Limits
- Hydrology
- Alameda Unincorporated

Alameda County Reference Map

