

**ALAMEDA LOCAL AGENCY FORMATION COMMISSION
RESOLUTION NO. 2006-27**

**APPROVING AN UPDATE TO THE SPHERE OF INFLUENCE FOR
THE EAST BAY REGIONAL PARKS DISTRICT**

WHEREAS, Government Code Section 56425 et seq. requires the Local Agency Formation Commission (LAFCo) to develop and determine the sphere of influence (SOI) of each local governmental agency within the County; and

WHEREAS, Government Code Section 56425(f) requires that LAFCo review and update the adopted SOI boundaries, as necessary, not less than once every five years; and

WHEREAS, Government Code Section 56430 requires that a municipal services review be conducted prior to or in conjunction with a SOI update; and

WHEREAS, LAFCo conducted a municipal services review of the services provided by the East Bay Regional Parks District (EBRPD) and adopted written determinations as required by Government Code Section 56430 on May 11, 2006; and

WHEREAS, the District maintains and operates regional parks, shorelines, trails, recreational areas, rental facilities, and golf courses. The District provides recreational programs at its facilities including fishing, boating, swimming, camping, golf, hiking, arts and craft activities, and environmental education activities. The District provides public safety services, including police, fire and paramedic. The District maintains natural areas, park areas, trees, landscaping, buildings, and other structures at its park sites and facilities. The District provides services at regional parks throughout its boundaries. The District provides limited water and wastewater services, generally via wells and septic systems, where other services are not available due to park location; and

WHEREAS, the agency was formed in 1933 as an independent district and is governed by a 7 member Board; and

WHEREAS, the EBRPD is a multi-county district and its boundaries include all of Alameda and Contra Costa Counties; and

WHEREAS, the SOI is coterminous with its bounds and there have not been changes to the SOI since it was formed; and

WHEREAS, the District's boundaries should be updated to reflect the extension of services to urban areas; and

WHEREAS, no change in regulation, land use or development will occur as a result of adopting a countywide SOI which is coterminous with the District's current service boundary; and

WHEREAS, in the form and manner prescribed by law, the Executive Officer has given notice of a public hearing by this Commission regarding the location of this SOI map; and

WHEREAS, the SOI update was duly considered at a public hearing held on July 13, 2006; and

WHEREAS, the Alameda LAFCo heard and received all oral and written protests, objections and evidence that were made, presented or filed, and all persons present were given an opportunity to appear and be heard with respect to any matter pertaining to said action.

NOW, THEREFORE, BE IT RESOLVED, DETERMINED AND ORDERED that the Alameda LAFCo hereby:

1. Retain the existing coterminous SOI for the East Bay Regional Parks District as generally depicted in Exhibit A attached hereto.

2. Consider the criteria set forth in Government Code Section 56425(e) and determine as follows:
 - a. *The present and planned land uses in the area, including agricultural and open-space lands* – The recommended SOI does not conflict with planned land uses. County policies support the provision of adequate regional park services for County residents. County plans include land uses and population growth needing park services.
 - b. *The present and probable need for public facilities and services in the area* – There is a steadily growing population needing services. Heightened public interest, growing youth and senior populations, increased access for persons with disabilities, and new forms of recreation are all resulting in increased demand for services.
 - c. *The present capacity of public facilities and adequacy of public services that the agency provides or is authorized to provide* – For the most part, services provided are adequate with the exception of fire and emergency medical service. EBRPD fire facilities are in poor condition and need renovation. The District conducts performance evaluation and monitors productivity to improve service efficiency.
 - d. *The existence of any social or economic communities of interest in the area if the commission determines that they are relevant to the agency* - The District serves residents countywide as well as those in Contra Costa County, and other park visitors.
 - e. *The existence of agricultural preserves or other important agricultural or open space land in the area which could be considered within an agency's SOI, and the effect on maintaining the physical and economic integrity of such resources in the event that such resources are within a SOI of a local governmental agency* – Regional park services are already provided throughout the County. While there is substantial open space, agricultural and Williamson Act designated land within District boundaries, no adverse effects will occur due to the nature of the services, and the fact that no SOI expansion is proposed.
 - f. *Nature, location, extent, functions & classes of services to be provided* - EBRPD maintains and operates regional parks, shorelines, trails, recreational areas, rental facilities, and golf courses; it provides recreational programs at its facilities including fishing, boating, swimming, camping, golf, hiking, arts and craft activities, and environmental education activities. EBRPD provides public safety services, including police, fire and paramedic. EBRPD maintains natural areas, park areas, trees, landscaping, buildings, and other structures at the District's park sites and facilities. The District provides services at regional parks throughout its boundaries. The District provides limited water and wastewater services, generally via wells and septic systems, where other services are not available due to park location. LAFCo is not designating EBRPD as a water and wastewater service provider.
3. Determine, as lead agency for the purposes of the California Environmental Quality Act (CEQA), this SOI update which expands the District's SOI to be countywide is categorically exempt under Section 15061(b)(3) of the CEQA Guidelines.
4. Direct staff to file a Notice of Exemption as lead agency under Section 15062 of the CEQA Guidelines.

* * * * *

This Resolution was approved and adopted by the Alameda Local Agency Formation Commission at a regular meeting held on July 13, 2006, at 7051 Dublin Boulevard in Dublin, California on the motion made by Commissioner Foulkes, seconded by Commissioner Kamena, and duly carried.

Ayes: 7 (Commissioners Combs, Foulkes, Steele, Miley, Lockhart, Kamena, and Sblendorio)
Noes: 0
Excused: 0

 /Janet Lockhart/

Janet Lockhart, Chair, Alameda LAFCo

Approved as to Form:

By: *Brian Washington*
Brian Washington, LAFCo Legal Counsel

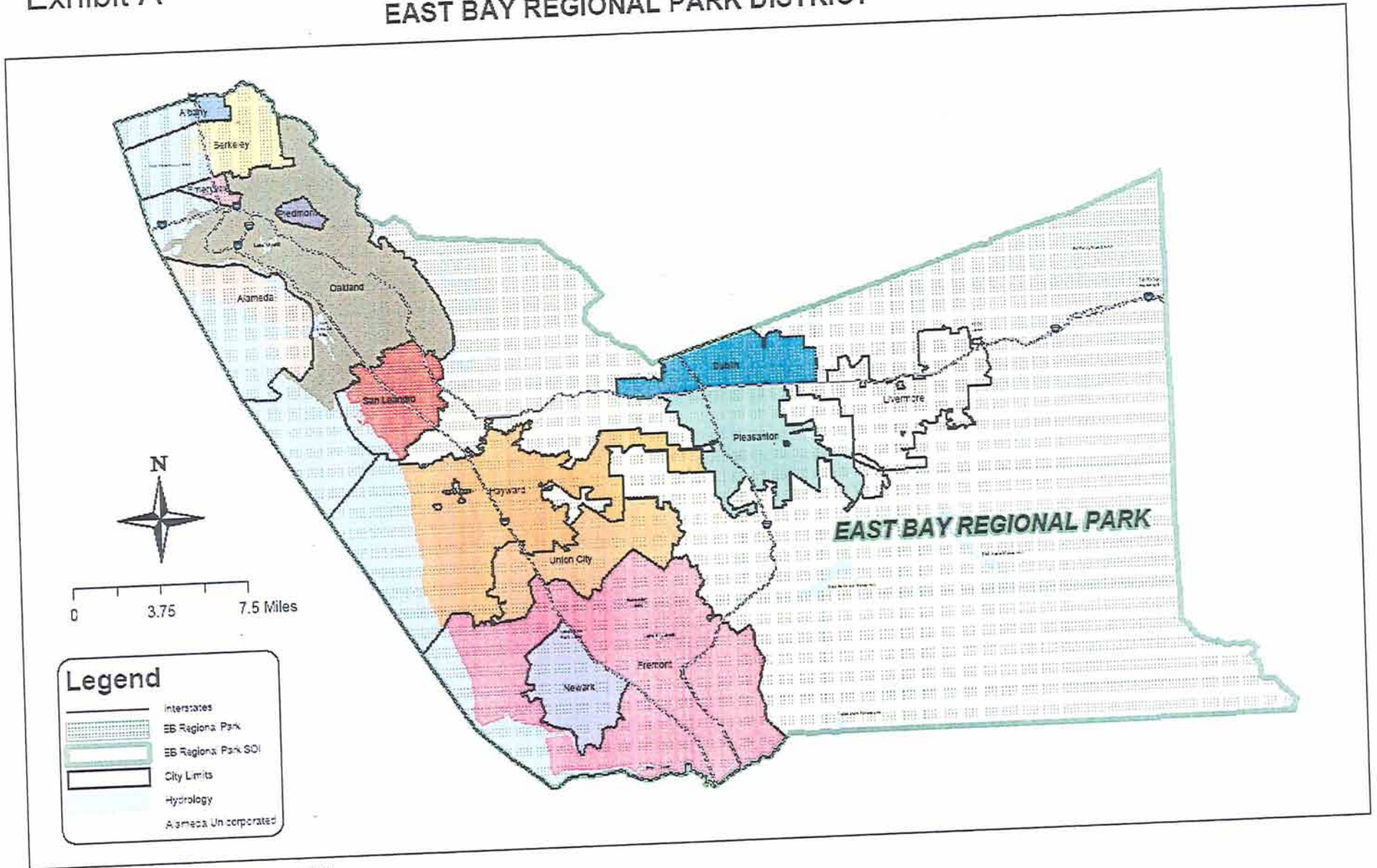
CERTIFICATION: I hereby certify that the foregoing is a correct copy of a resolution adopted by the Alameda Local Agency Formation Commission, Oakland, California.

Attest: *Crystal Hishida Graff*
Crystal Hishida Graff, LAFCo Executive Officer

Date: 7/27/06

Exhibit A

EAST BAY REGIONAL PARK DISTRICT



Legend

- Interstates
- EB Regional Park
- EB Regional Park SOI
- City Limits
- Hydrology
- Alameda Unincorporated