

Yolo Broadband Strategic Plan

Alameda LAFCo - May 14, 2015

Christine Crawford, Executive Officer - Yolo LAFCo

Yolo
LAFCo



Collaboration for Better Government

Why Is Broadband Important?

- Economic Development
- Commerce
- Agriculture
- Schools/Homework
- Adult Education & Training
- Digital Literacy & Equity
- Healthcare
- Public Safety
- Government Services
- Entertainment
- Telecommuting



Dial-Up – 56Kbps

- Legacy technology
- Shared Technology

ADSL – 10Meg

- First Generation of DSL
- Shared Technology

ADSL2 – 24Meg

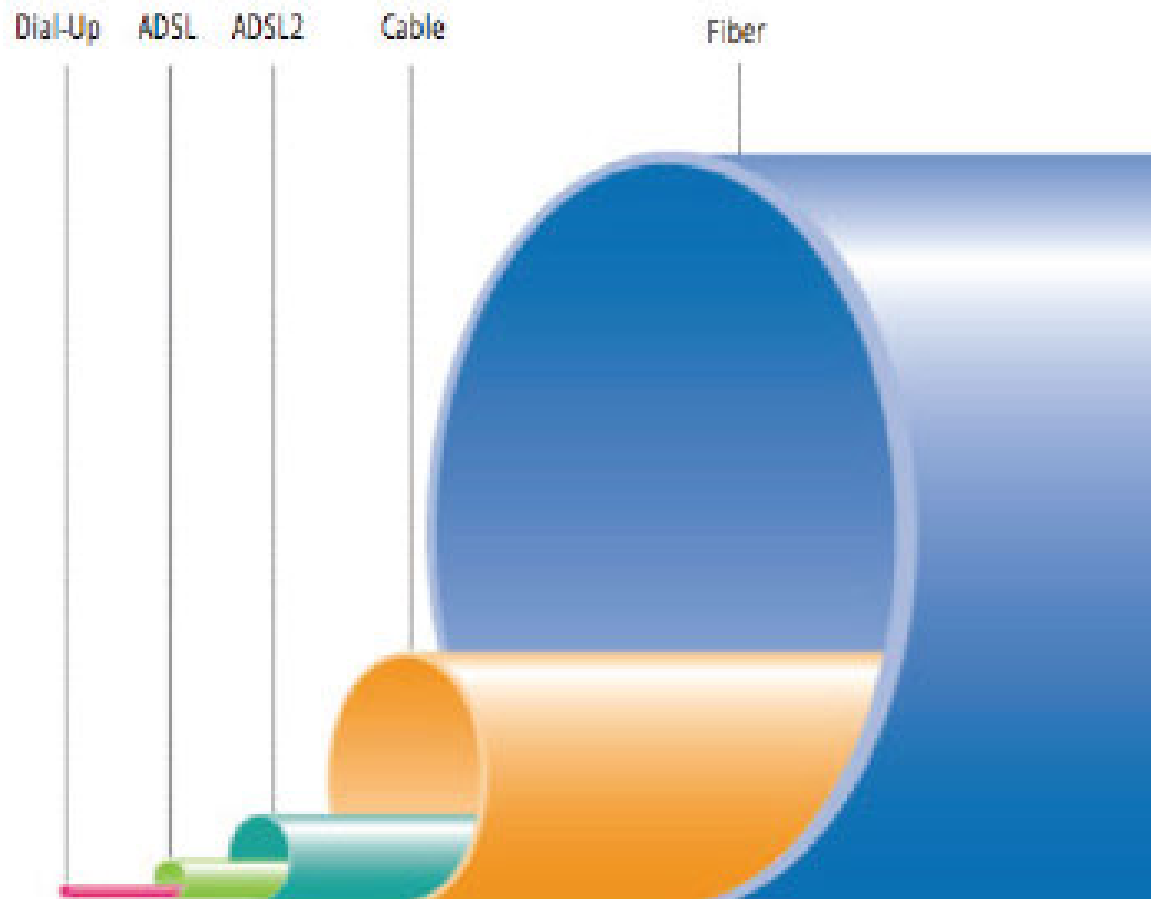
- Second Generation DSL
- Shared Technology

Cable – 150Meg

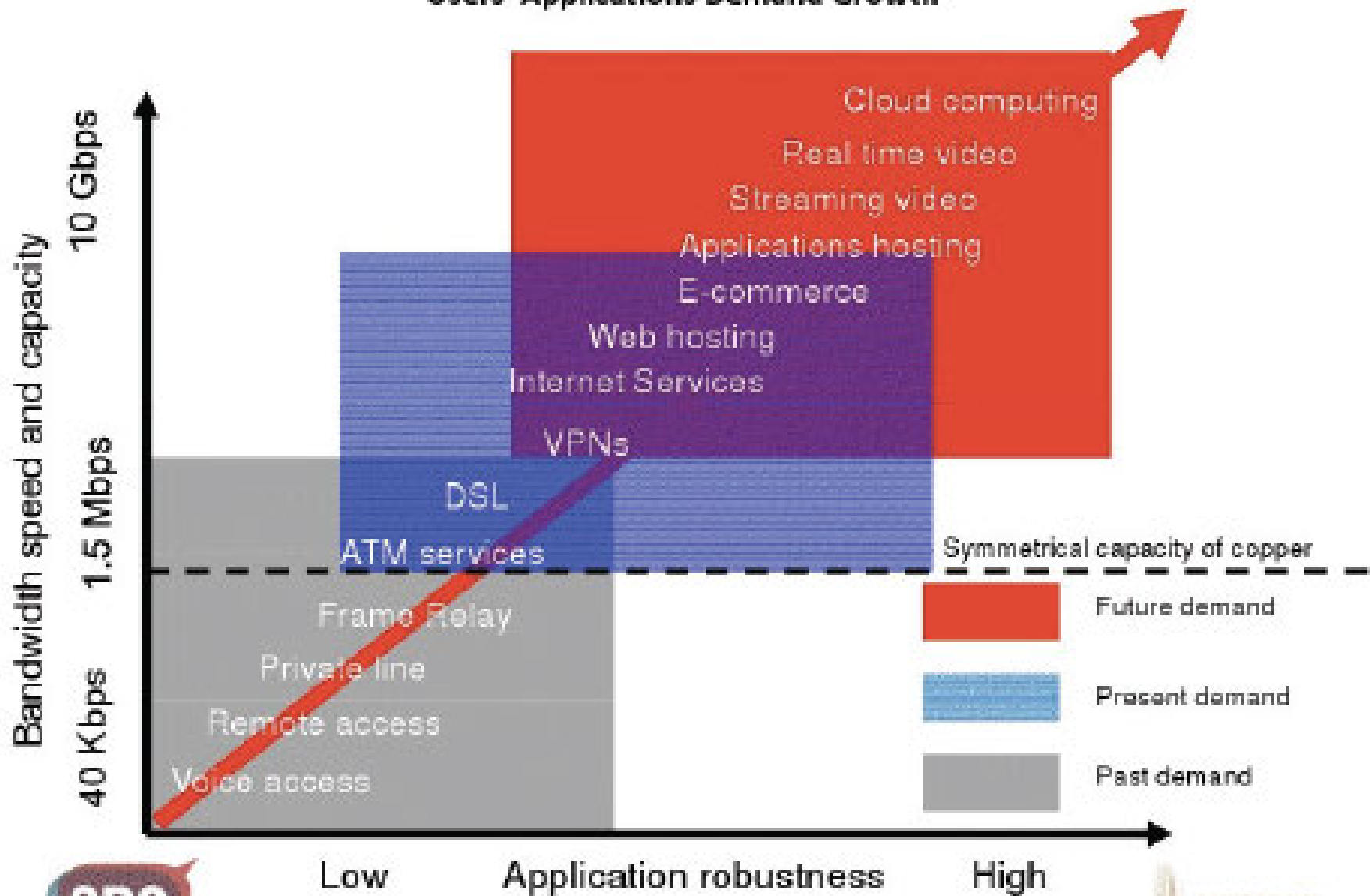
- DOCSIS 3.0
- Shared Technology

Fiber – 1Gbps

- PON, Active Ethernet
- Shared and
- Dedicated Technology



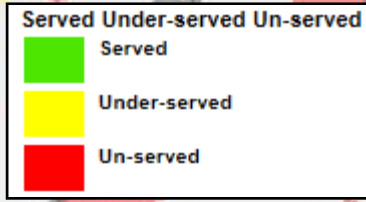
Users' Applications Demand Growth



YBSP Catalysts

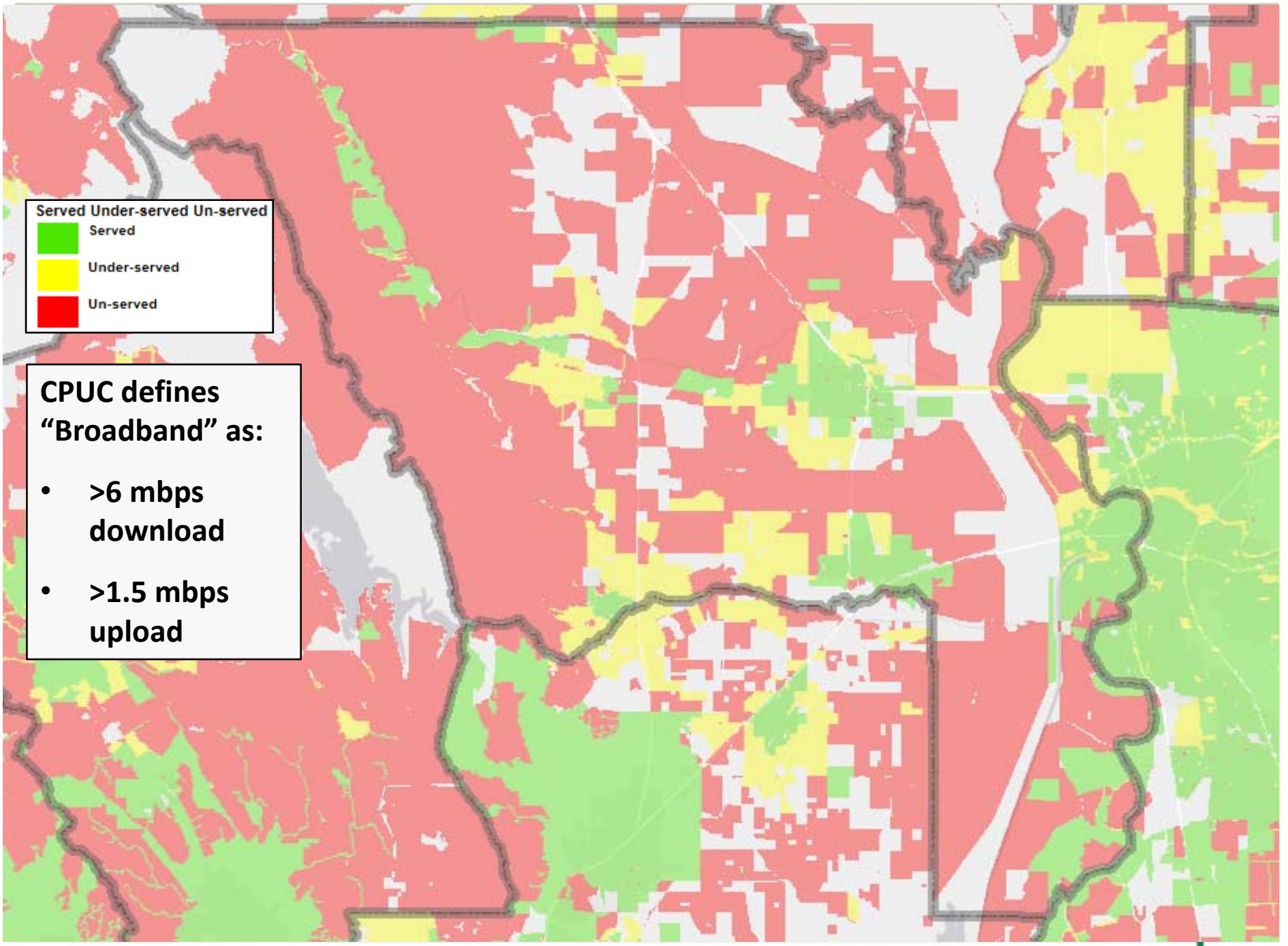
- Lack of market competition driving investment in Yolo
- **Missed opportunities** (2012 CENIC build through Yolo, Woodland-Davis Water Project, ARRA grant, etc.)
- Needed collective focus
- Partners for grant funding
- Frustration re: CPUC Broadband Availability Maps
- Collaboration to bring attention to local issues
- Economic Development imperative – both urban and high tech agriculture





**CPUC defines
"Broadband" as:**

- **>6 mbps
download**
- **>1.5 mbps
upload**



Why LAFCo?

- Needed a collective voice to be competitive for:
 - State and federal grants
 - Refuting CPUC mapping
 - Provider attention/investment
- Local agencies did not have focus or resources
- Asked LAFCo to lead effort and Commission agreed
- LAFCo Shared Services effort



Yolo
LAFCo

Collaboration for Better Government



Yolo Broadband Strategic Plan Process



- Hired consultant via RFP process (\$42,600)
- Took approx. 1 year + a lot of staff time
- Conducted surveys/speed test data
- Stakeholder Engagement
- Action plan for each city and unincorporated communities

Yolo
LAFCO

Collaboration for Better Government

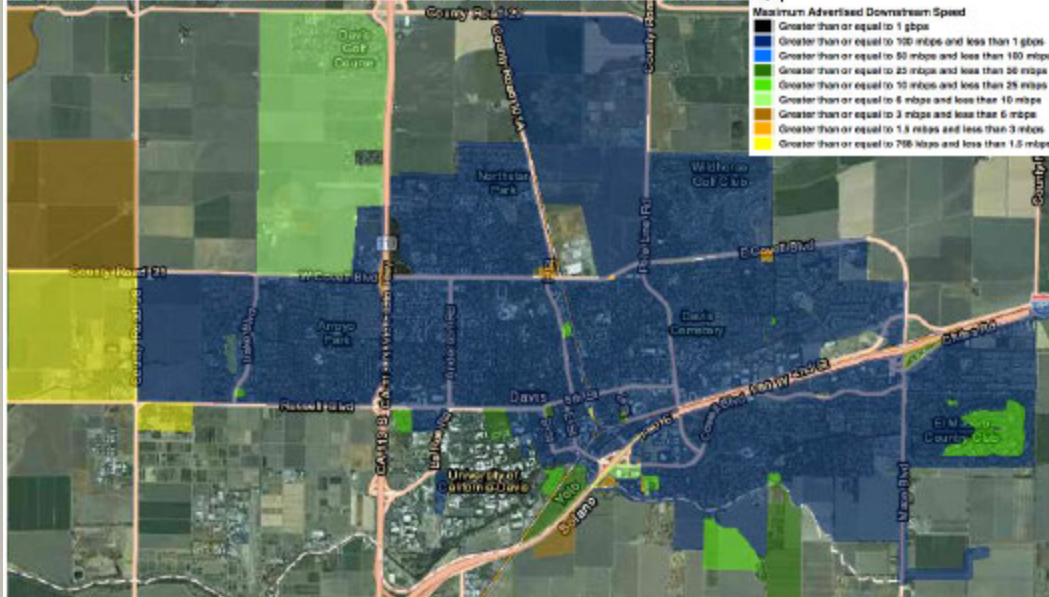


Findings

- 1,000+ speed test survey results
- Residential - half of survey results indicate underserved where availability maps show served (includes cities)
- Businesses - larger businesses can pay to get service they need, but small to medium just make due **YET SMALL TO MEDIUM BUSINESSES CREATE 5X MORE JOBS**
- Disparity in service – even in cities **THIS IS NOT JUST A RURAL ISSUE**
- Agriculture industry reports broadband is #1 need



Figure 4.1: Residential Broadband Coverage in Davis (Download Speeds Only)

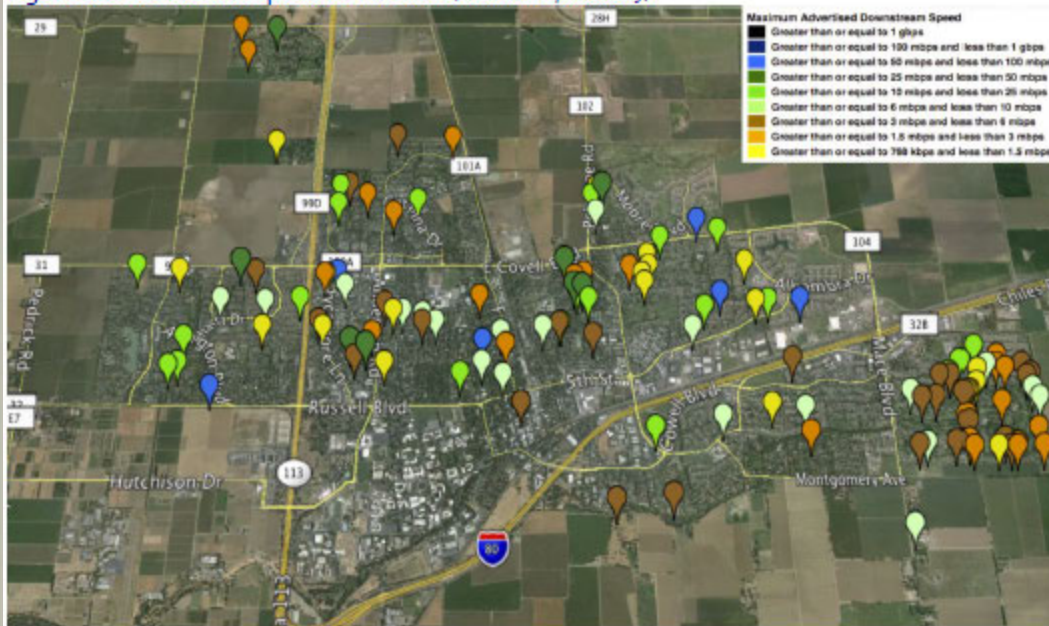


Broadband Speed in City of Davis



What providers report

Figure 4.2: Residential Speedtest Results (Download Speeds Only)



Actual speed tests

Yolo
LAFCO

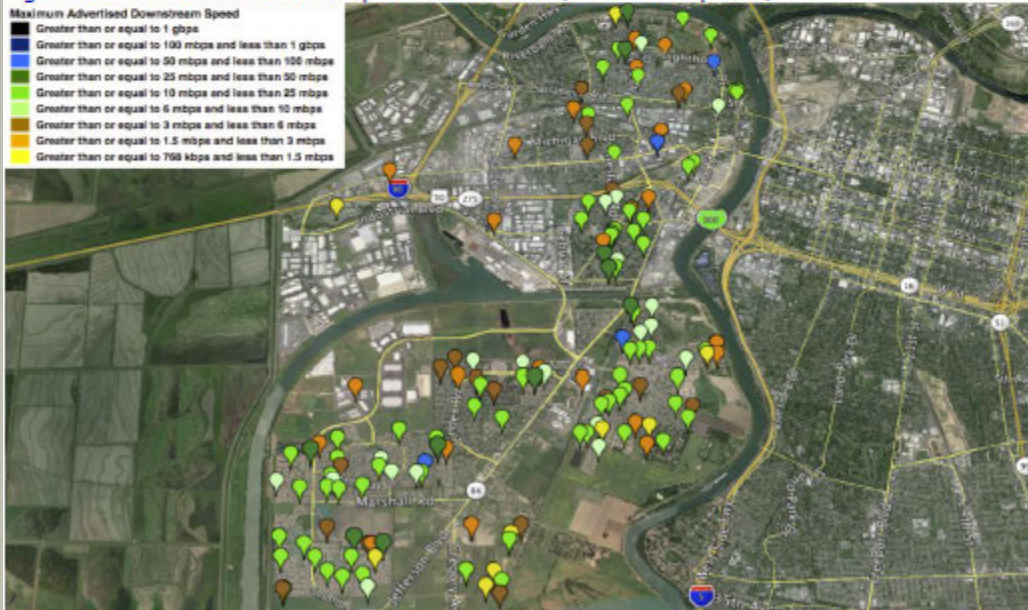


Collaboration for Better Government

Figure 5.1: Residential Wireline Broadband Availability By Speed (Download Speeds)



Figure 5.2: Residential Wireline Speed Test Results (Download Speeds)



Broadband Speed in City of West Sacramento



What providers report



Actual speed tests

Yolo
LAFCO

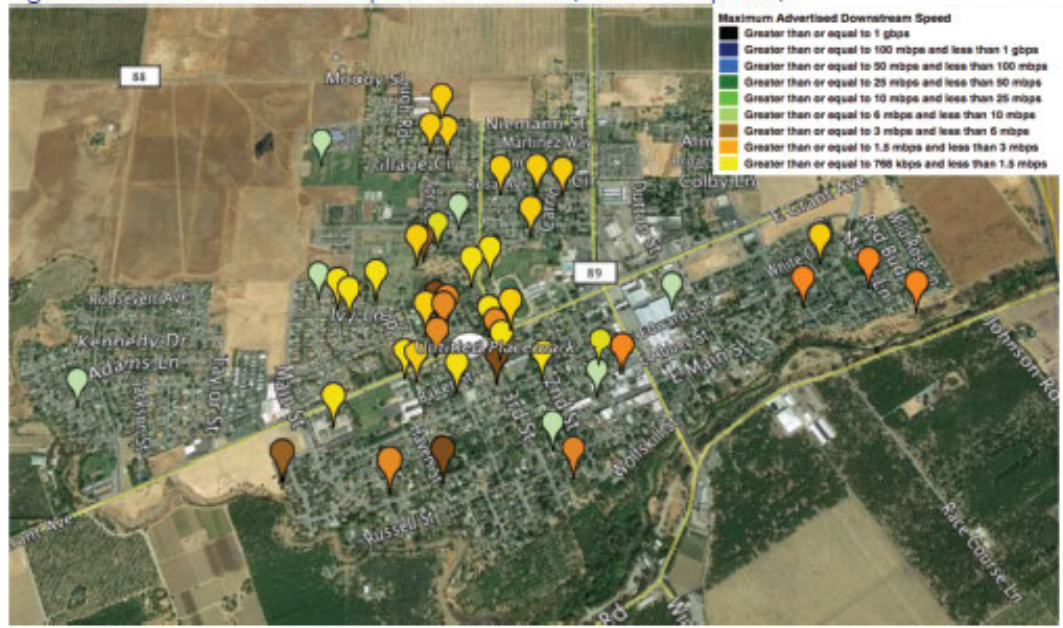


Collaboration for Better Government

Figure 7.2: Residential Wireline Broadband Availability By Speed (Download Speeds)



Figure 7.3: Residential Wireline Speed Test Results (Download Speeds)



Broadband Speed in City of Winters



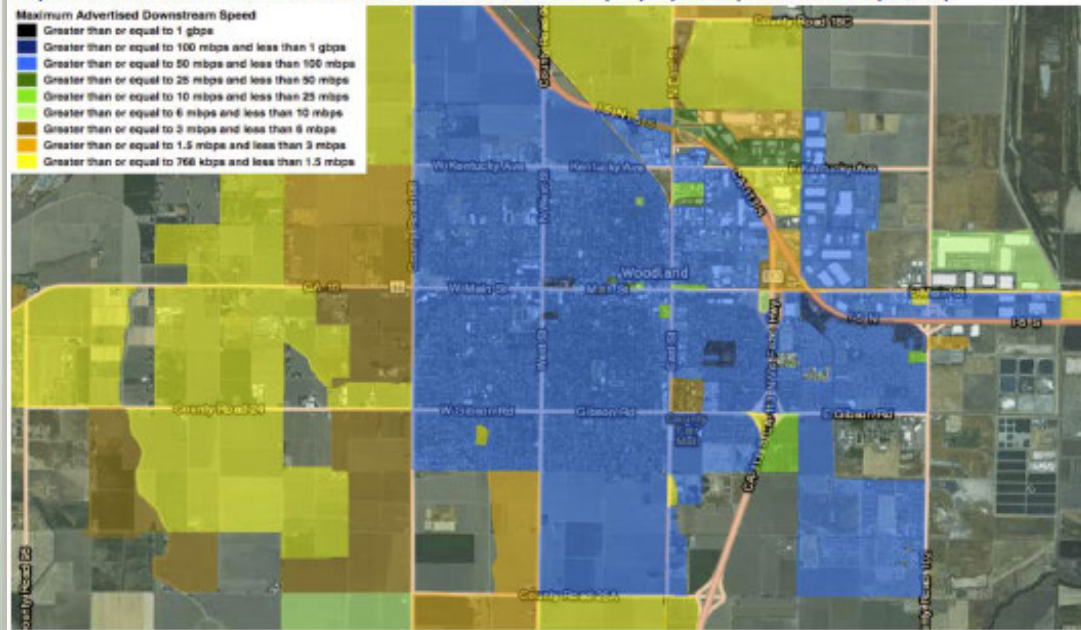
What providers report



Actual speed tests



Figure 6.1: Residential Wireline Broadband Availability By Speed (Download Speeds)

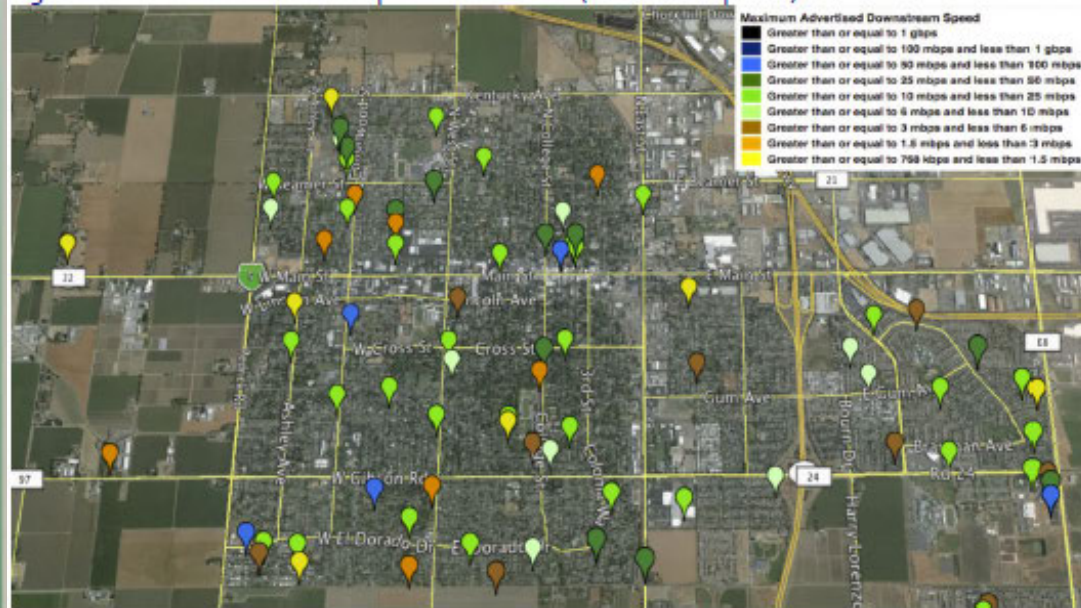


Broadband Speed in City of Woodland



What providers report

Figure 6.2: Residential Wireline Speed Test Results (Download Speeds)



Actual speed tests

Yolo
LAFCO



Collaboration for Better Government

Broadband Speed in Unincorporated Clarksburg



What providers report (Frontier)

Download Speed 10-25 Mbps

Upload Speed 1.5-3 Mbps



Actual speed tests

Download Speed 2.31-3.15 Mbps

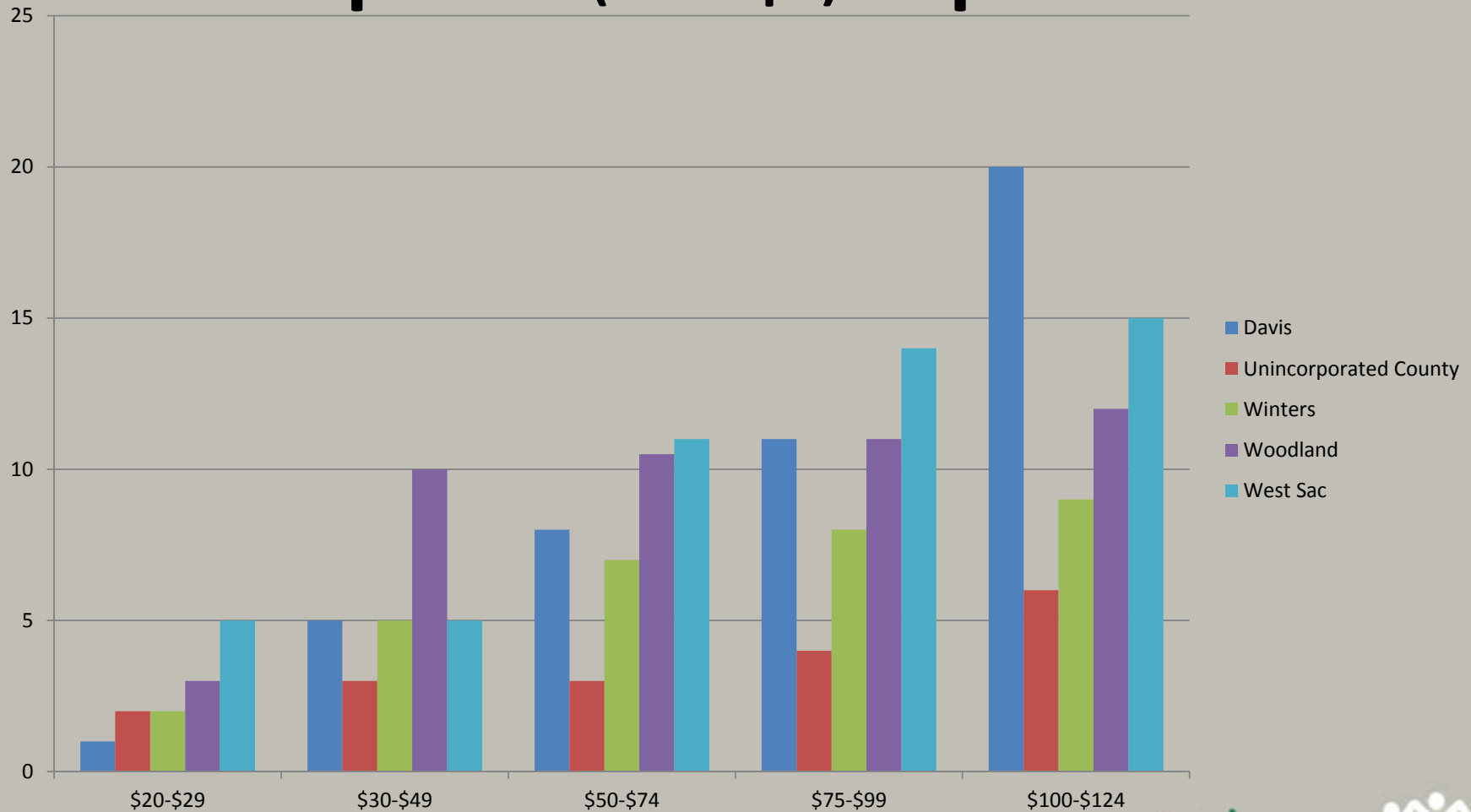
Upload Speed 0.20-0.38 Mbps

Yolo
LAFCO



Collaboration for Better Government

Monthly Cost Versus Speeds (in Mbps) Reported



Yolo
LAFCO

Collaboration for Better Government



Positive Outcomes

- Broadband has become a council/BOS priority issue
- Staff awareness - cultural shift to plan for broadband as essential public infrastructure
- Agencies will adopt broadband policies into their General Plans to create framework (i.e. install conduit with public and private projects, dig once, open trench, engineering standards, etc.)
- Advocacy and funding
- State/investor attention to Yolo
- LAFCo continuing role to support agencies' next steps and continue coordination meetings

Yolo
LAFCO

Collaboration for Better Government



Why LAFCos Should Care?

- Shared Services:
 - Small cities may not have resources
 - Unincorporated communities can't act alone
- Disadvantaged (Unincorporated) Community Issue:
 - Disadvantaged communities need access to broadband, just like electricity and other critical infrastructure
- LAFCos need to support communities taking initiative to fill their broadband gaps



LAFCo Approvals for Broadband?

- Services outside city and district boundaries
- Authorizing services that agencies can provide
- What types of agencies are authorized to provide municipal broadband?
- Stay tuned...





Questions?

Christine Crawford christine.crawford@yolocounty.org

The Yolo Broadband Strategic Plan is available at:
www.yololafco.org

Yolo
LAFCO

Collaboration for Better Government

