

CITY OF BERKELEY

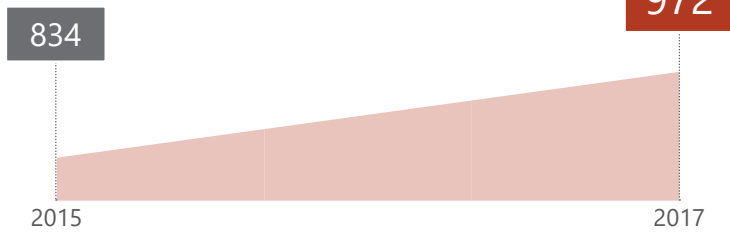
2017 EVERYONE COUNTS

HOMELESS POINT-IN-TIME COUNT AND SURVEY

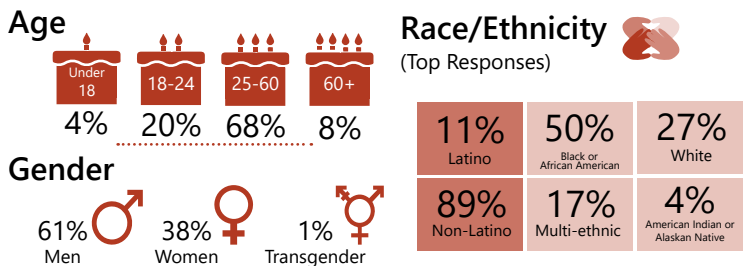
Every two years, during the last 10 days of January, communities across the country conduct comprehensive counts of the local homeless populations in order to measure the prevalence of homelessness in each local Continuum of Care.

The 2017 Alameda County Point-in-Time Count was a community-wide effort conducted on January 30, 2017. In the weeks following the street count, a survey was administered to 308 unsheltered and sheltered homeless individuals in Berkeley, in order to profile their experience and characteristics.

Berkeley Homeless Population



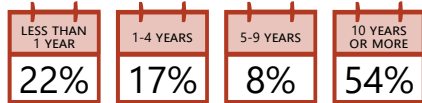
2017 Sheltered/Unsheltered Population



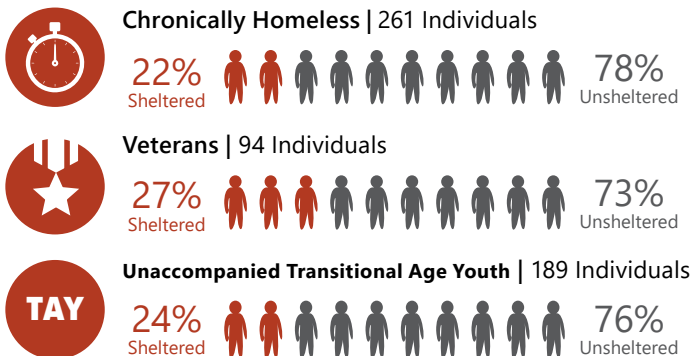
Residence Prior to Homelessness



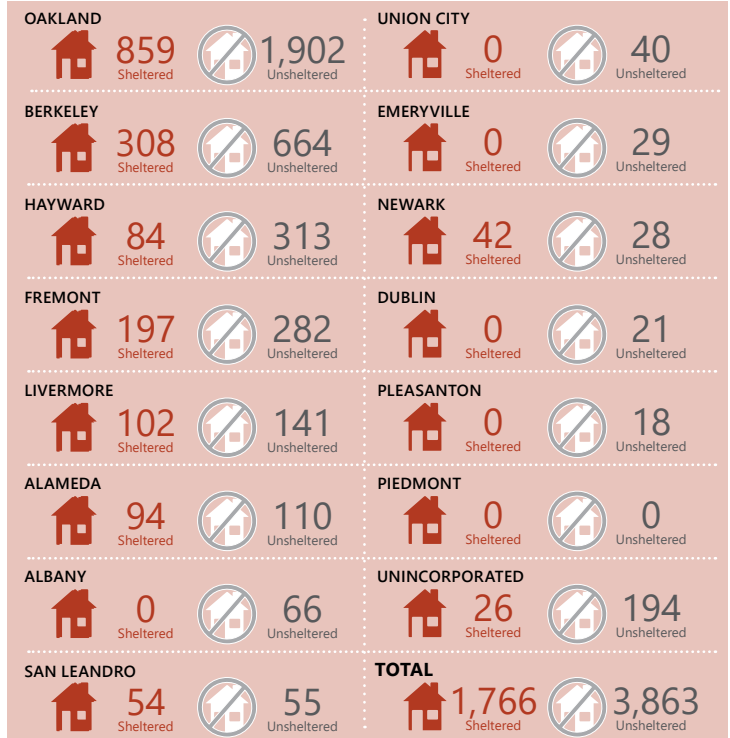
Length of Time in Alameda County



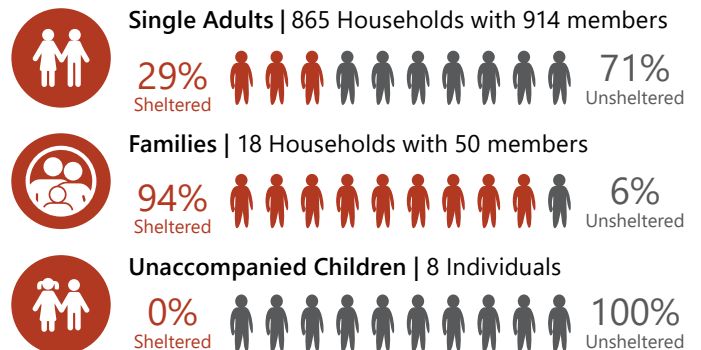
Subpopulations



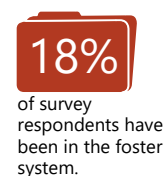
2017 Sheltered/Unsheltered Population by City



Household Breakdown



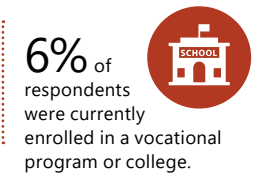
Foster Care



Justice System Involvement



Post K-12 Education



Health Conditions

Current health conditions affecting housing stability or employment.

(Note: Multiple response question, numbers will not total to 100%)



43%

Psychiatric or emotional conditions



28%

Chronic health problems



28%

Post-Traumatic Stress Disorder



25%

Physical disability



24%

Drug or alcohol abuse



10%

Traumatic brain injury



9%

AIDS/HIV related

Disabling Conditions

Respondents reported the number of conditions that limited their ability to maintain work or housing. Many reported multiple conditions.

14% of survey respondents reported having one disabling condition.

11% of survey respondents reported having two disabling conditions.

15% of survey respondents reported having three or more disabling conditions.

First Homelessness Episode



44% Yes
57% No

35% of those experiencing homelessness for the first time were homeless for one year or more

Age at First Episode of Homelessness

19% 0-17	32% 18-24	26% 25-39
12% 40-49	10% 50-64	1% 65+

Primary Cause of Homelessness (Top 6 Responses)

52% Money Issues	17% Personal Relationships	14% Mental Health Issues
11% Substance Use Issues	7% Physical Health Issues	6% Incarceration

What Might Have Prevented Homelessness (Top 4 Responses)

39% Employment Assistance	33% Rent Assistance
26% Benefits/Income	22% Mental Health Services

Not Interested in Housing

3% of survey respondents said they were not interested in Independent, Affordable Rental Housing or Housing with Supportive Services.

Services and Assistance



68% of survey respondents reported receiving benefits

Services Currently Accessing (Top 6 Responses)

72% Free Meals	43% Emergency Shelter	28% Drop-in Center
25% Health Services	17% Mental Health Services	13% Transitional Housing

Reasons for Not Accessing Shelter Services (Top 6 Responses)

31% Bugs and germs	24% Concerns for personal safety	21% They are full
18% Too crowded	16% Too many rules	11% Nowhere to store my stuff

*Subpopulation Definitions

Chronically Homeless

An individual with a disabling condition or a family with a head of household with a disabling condition who:

- » Has been continuously homeless for 1 year or more and/or;
- » Has experienced 4 or more episodes of homelessness within the past 3 years.

Veterans

Persons who have served on active duty in the Armed Forces of the United States. This does not include inactive military reserves or the National Guard unless the person was called up to active duty.

Families

A household with at least one adult member (persons 18 or older) and at least one child member (persons under 18).

Unaccompanied Children

Children under the age of 18 who are homeless and living without a parent or legal guardian.

Transition-Age Youth

Young adults between the ages of 18 and 24 years old.

Berkeley County will release a comprehensive report of The EveryOne Home 2017 Homeless Count and Survey in Summer 2017. For more information about EveryOne Home and effort to address homelessness in Alameda County please visit www.EveryOneHome.org

Source: Applied Survey Research. (2017). Alameda County Homeless Census & Survey. Watsonville, CA.