

OWNER / DEVELOPER
 SRE DEVELOPMENT COMPANY
 901 CAMPSI WAY, SUITE 222
 CAMPBELL, CA 95006
 (408) 819-0620
 CONTACT: MIKE SULLIVAN

CIVIL ENGINEER
 CARLSON, BARBEE & GIBSON INC.
 2633 CAMINO RAMON
 SAN RAMON, CA
 (925)866-0322
 CONTACT: LEE ROSENBLATT

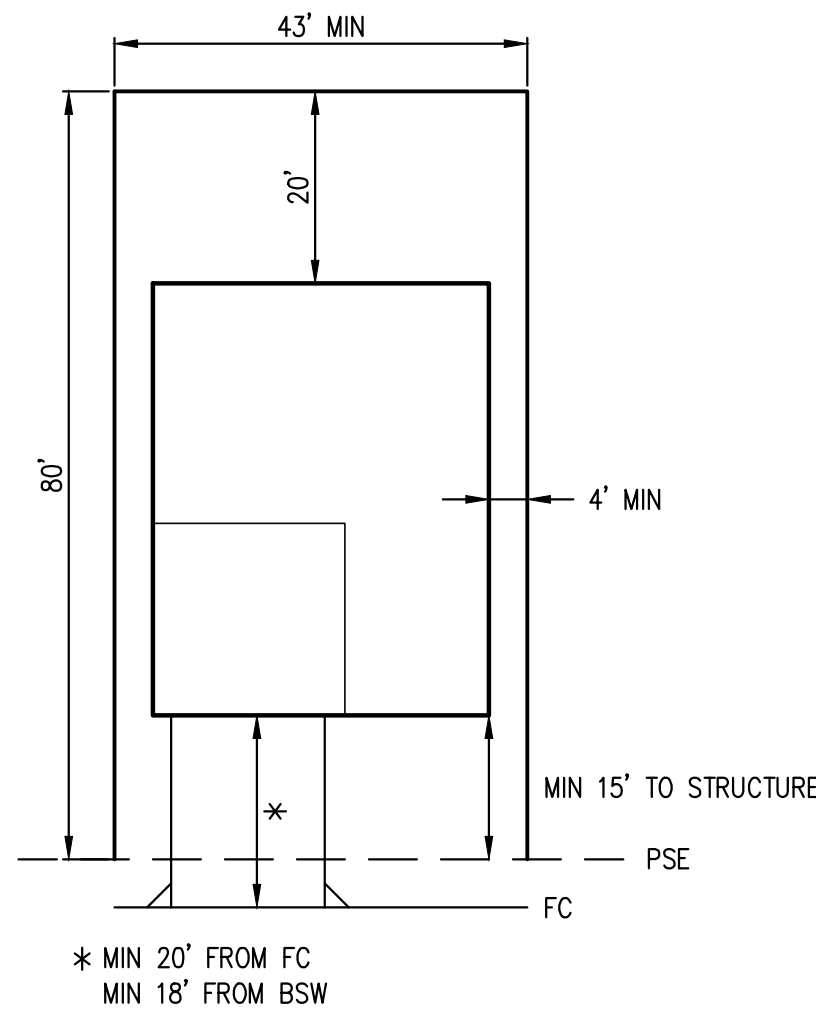
SOILS ENGINEER
 STEVENS, FERRONE & BAILEY
 1600 WILLOW PASS COURT
 CONCORD, CA 94520
 (925) 688-1001
 CONTACT: KEN FERRONE

AMENDED EXHIBIT B FOR VESTING TENTATIVE MAP (ADJUSTED)

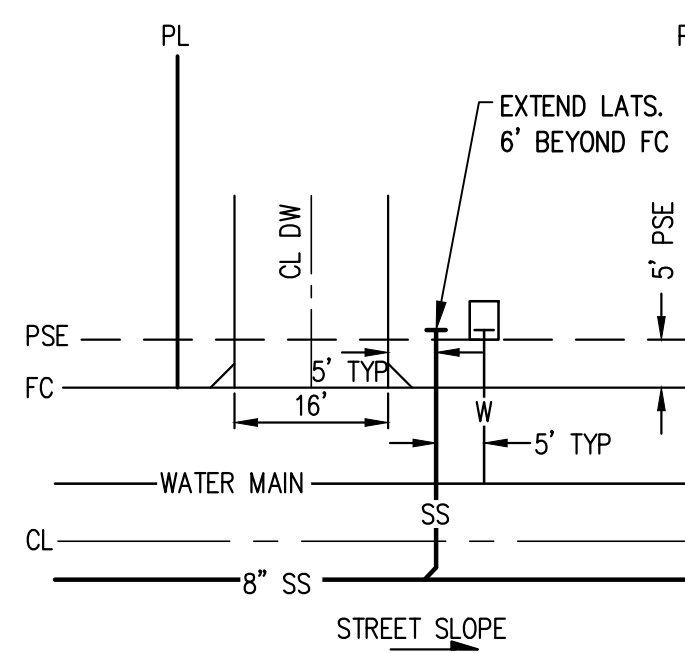
BOUNDARY CREEK (A.K.A. ROBERTS RANCH) TRACT 7530

LOT INFORMATION

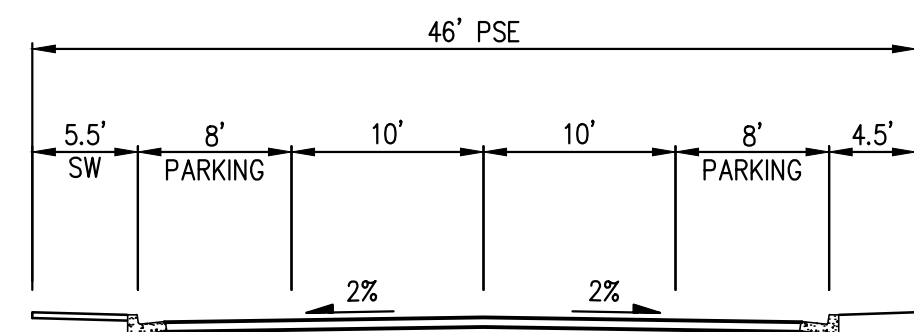
LOT #	SIZE (SF)
1	6,054
2	6,581
3	6,159
4	5,214
5	4,966
6	5,030
7	6,600
8	6,734
9	5,809
10	5,063
11	13,603
12	4,398
13	5,104
14	10,077
15	5,503
16	5,469
17	6,792
18	6,508
19	4,375
20	4,432
21	4,856
LOT A (STREET)	34,894
LOT B (SOUTH CREEK)	65,860
LOT C (NORTH CREEK)	122,138
LOT D (WATER QUALITY)	2,464
LOT E (WATER QUALITY)	3,293
TOTAL:	357,976



TYPICAL MIN. LOT SETBACK
 NTS



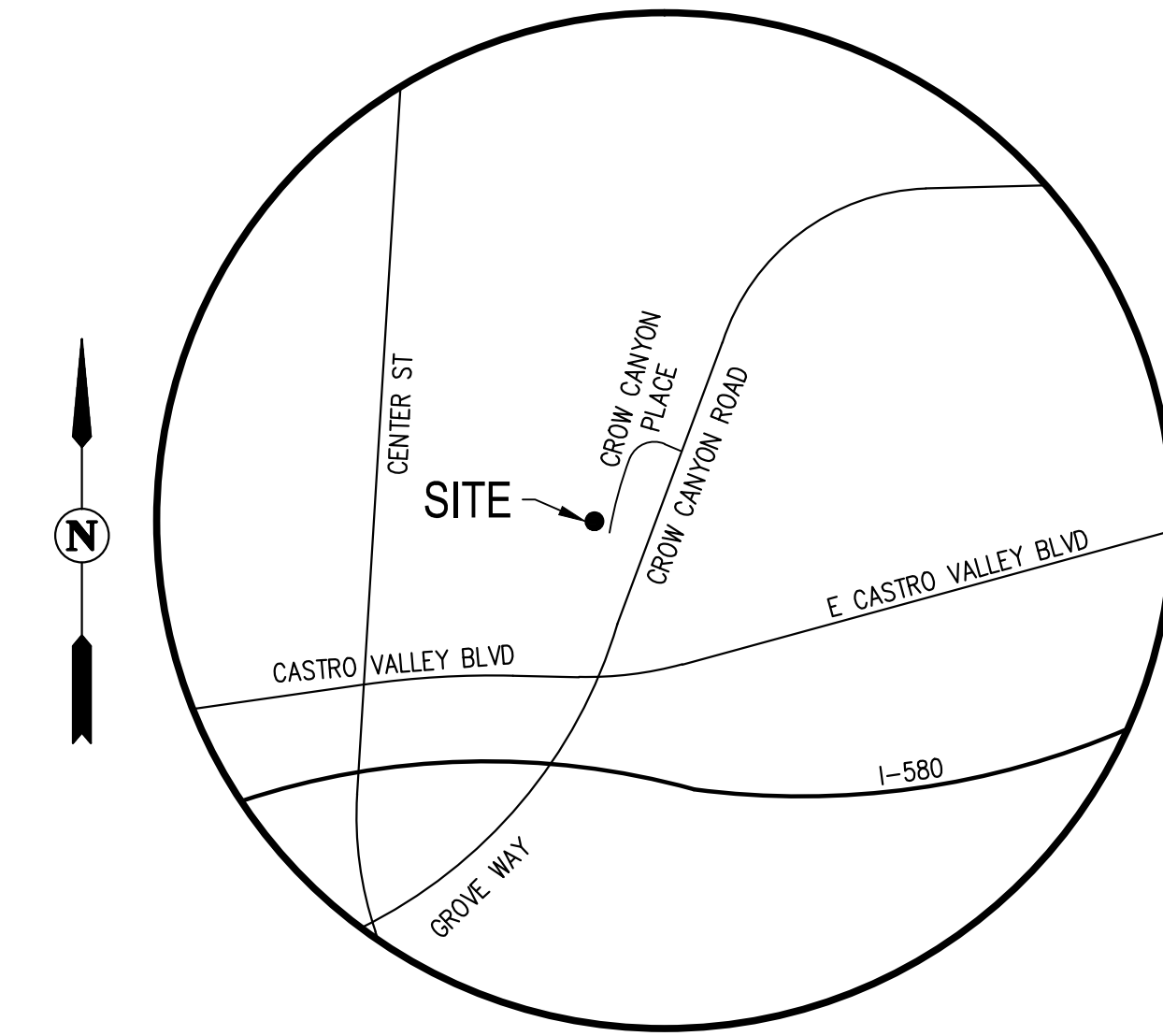
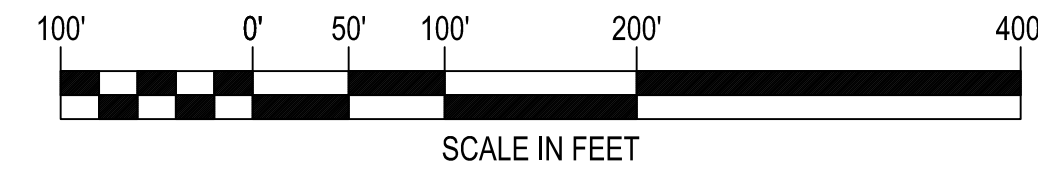
TYPICAL LATERAL LOCATION
 NTS



SECTION A-A
 TYPICAL 46' PSE
 NTS



SCALE: 1"=100'



VICINITY MAP
 NTS

LEGEND

EXISTING	PROPOSED	DESCRIPTION
---	- - - - -	BOUNDARY
---	---	RIGHT-OF-WAY
---	---	PROPERTY LINE
---	---	CENTER LINE
---	---	EASEMENT
---	---	SIDEWALK
---	---	ASPHALT CONCRETE PAVEMENT
---	---	FENCE
---	---	SPOT ELEVATIONS
---	---	BIORETENTION AREA
---	---	STORM DRAIN LINE
---	---	SANITARY SEWER
---	---	WATER
---	---	JOINT TRENCH
●	●	SANITARY SEWER MANHOLE
●	●	STORM DRAIN MANHOLE
■	■	CURB INLET
■	■	FIELD INLET
■	■	FIRE HYDRANT

ABBREVIATIONS

AC	ASPHALT CONCRETE
BD	BOUNDARY
BW	BACK OF WALK
DU	DWELLING UNIT
DW	DRIVEWAY
EVA	EMERGENCY VEHICLE ACCESS
EX	EXISTING
FC	FACE OF CURB
H	HEIGHT
JT	JOINT TRENCH
LAT	LATERAL
MIN	MINIMUM
NTS	NOT TO SCALE
PL	PROPERTY LINE
PSE	PUBLIC SERVICE EASEMENT
R/W	RIGHT-OF-WAY
SD	STORM DRAIN
SDMH	STORM DRAIN MANHOLE
SS	SANITARY SEWER
SSMH	SANITARY SEWER MANHOLE
SW	SIDEWALK
TC	TOP OF CURB
W	WATER

SHEET INDEX

SHEET NO.	SHEET TITLE
1	COVER SHEET
2	TENTATIVE MAP
3	UTILITY PLAN
4	GRADING PLAN
5	CROSS SECTIONS AND DETAILS
6	DIRT DISTRIBUTION PLAN

PROPERTY INFORMATION:

A.P.N.: 084C-1068-001
 084C-1068-007
 084C-1068-008
 PARCEL SIZE: 8.22 AC ±
 CURRENT ZONING: SINGLE FAMILY R-5000, R-10000
 PROPOSED USE: PD
 PROPOSED DENSITY: 2.55 DU/AC
 CURRENT LAND USE: VACANT
 PROPOSED LAND USE: 21 SINGLE FAMILY HOMES, DETACHED
 GRADING QUANTITY: 14,000 CY

NOTES:

1. AREA SERVICE PROVIDERS:
 SEWER: CASTRO VALLEY SANITARY DISTRICT
 WATER: EAST BAY MUNICIPAL UTILITY DISTRICT
 POWER: PACIFIC GAS AND ELECTRIC
 TELEPHONE: SBC
 FIRE: ALAMEDA COUNTY FIRE DEPARTMENT
 STORM DRAINAGE: ALAMEDA COUNTY

ALAMEDA COUNTY PLANNING DEPARTMENT
 REVIEWED AND APPROVED:
 BY: _____ DATE: _____
 PLANNING DIRECTOR

NO.	BY	DATE

Carlson, Barbee & Gibson, Inc.
 CIVIL ENGINEERS • SURVEYORS • PLANNERS
 2633 Camino Ramon, Suite 350 • San Ramon, CA 94583
 925-866-0322
 www.cbgi.com



COVER SHEET
 BOUNDARY CREEK
 TRACT 7530

DESIGNED:	STAFF
DRAWN:	M.K.A.
CHECKED:	L.J.R.
SCALE:	1"=100'
SHEET NO.	1 OF 6
JOB NO.	1922-050

084C-1064-069
DEWITT JAMES A & SHIRLEY A

084C-1064-070
BAITINGER DELIA B

084C-1064-058
ESSABHOY
TRUST

084C-1064-057
HEINZE JACK D
& EILEEN M

084C-1064-056
SKYE MARY A

084C-1064-054
MURRAY RONALD C
& BONNIE V

084C-1064-055
BARNES DEBI MARIE

084C-1067-007
RICHEY TRUST

084C-1067-010
KNUPPE HERMAN J JR
& BARBARA J

VERONICA AVENUE

084C-1064-094
STRUCK FRANCES A

084C-1064-093
TREVIZO JAMES
& LISA D

LOT "A"

LOT C
CREEK & CONSERVATION
EASEMENT AREA

LOT "A"

LOT D
(BIORETENTION
AREA)

LOT B
CREEK & CONSERVATION
EASEMENT AREA

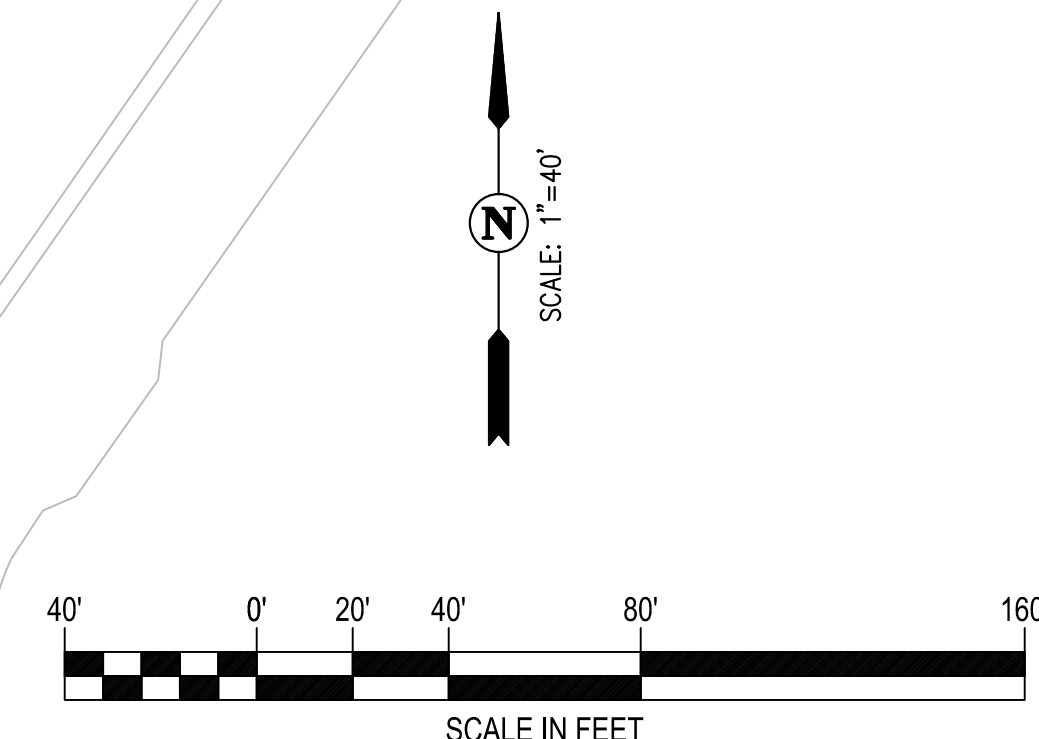
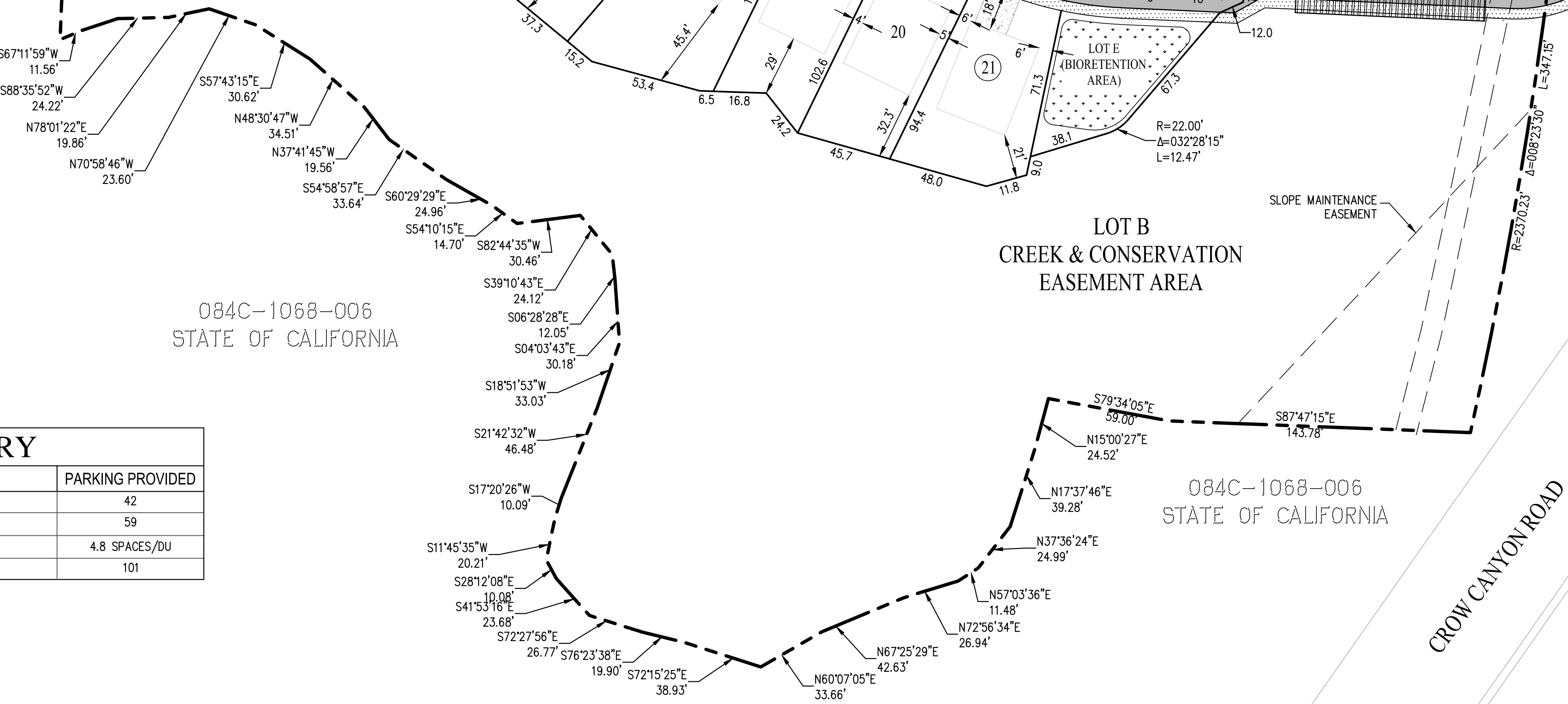
084C-1068-006
STATE OF CALIFORNIA

084C-1068-006
STATE OF CALIFORNIA

CROW CANYON PLACE

CROW CANYON ROAD

PARKING SUMMARY			
UNITS	PARKING REQUIRED		PARKING PROVIDED
	21	GARAGE	
DRIVEWAY/GUEST		21	59
RATIO		3 SPACES/DU	4.8 SPACES/DU
	TOTAL	63	101



NO.	BY	DATE	REVISIONS

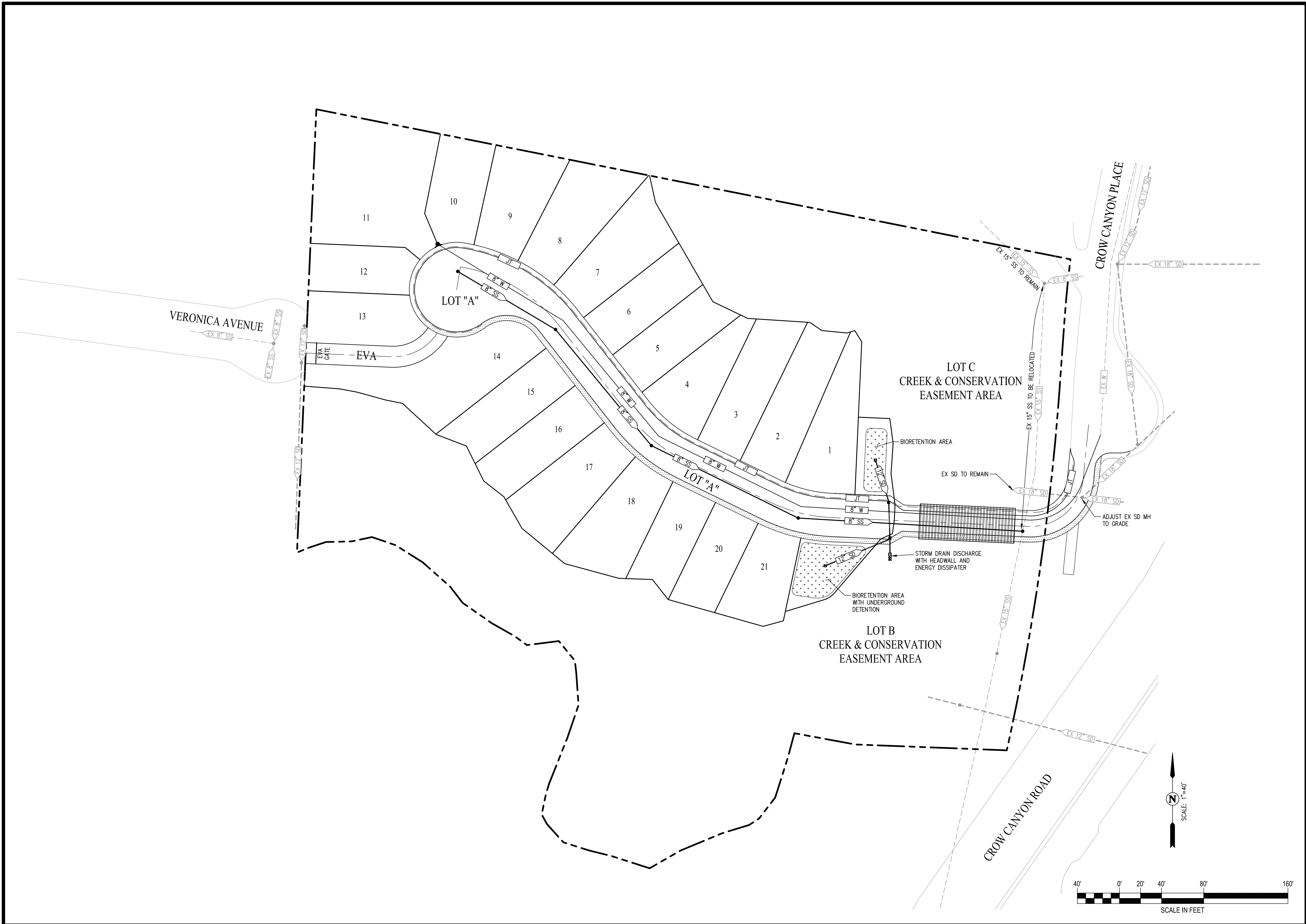
Carlson, Barbee & Gibson, Inc.
CIVIL ENGINEERS • SURVEYORS • PLANNERS
2653 Camino Ramon, Suite 350 • San Ramon, CA 94583
925-866-0322
www.cbgi.com




TENTATIVE MAP
BOUNDARY CREEK
TRACT 7530
CALIFORNIA
CASTRO VALLEY

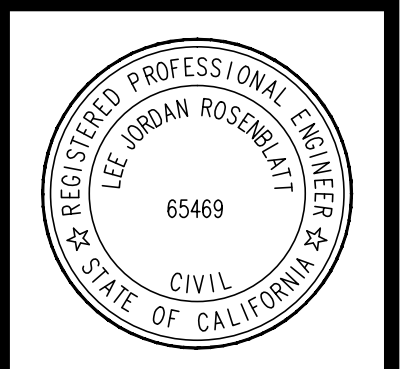
DESIGNED:	STAFF
DRAWN:	M.K.A.
CHECKED:	L.J.R.
SCALE:	1"=40'
SHEET NO.	2 OF 6
JOB NO.	1922-050

G:\1922-50\ACAD\TM - CONFORMANCE\TM2.DWG 10/21/2015 8:22 AM



NO.	BY	DATE	REVISIONS	APPROVAL

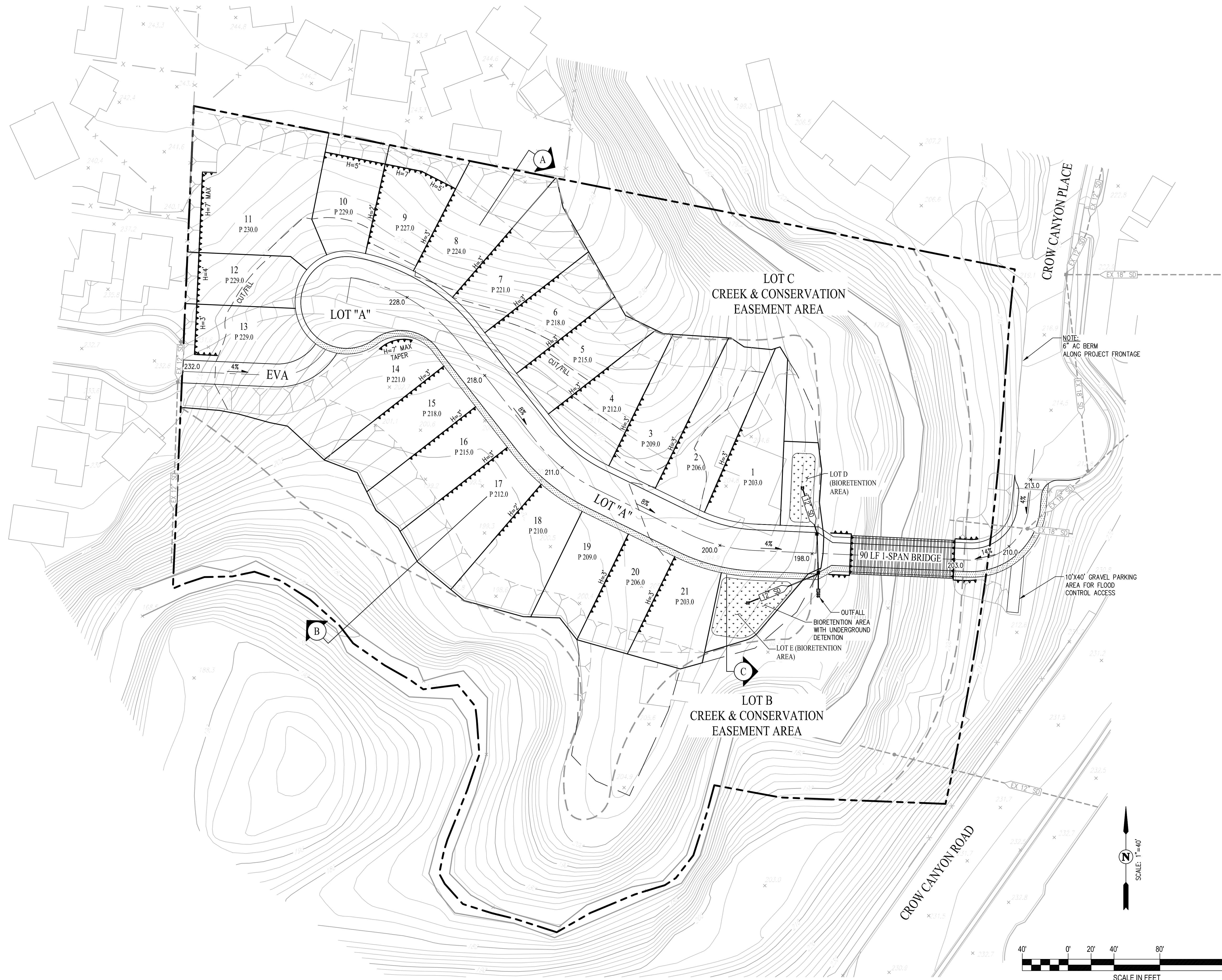
Carlson, Barbee & Gibson, Inc.
 CIVIL ENGINEERS • SURVEYORS • PLANNERS
 2633 Camino Ramon, Suite 350 • San Ramon, CA 94583
 925-866-0322
 www.cbgi.com



UTILITY PLAN
 BOUNDARY CREEK
 TRACT 7530

DESIGNED: STAFF
 DRAWN: M.K.A.
 CHECKED: L.J.R.
 SCALE: 1"=40'
 SHEET NO. 3 OF 6
 JOB NO. 1922-050

G:\1922-050\ACAD\TM - CONFORMANCE\TM3.DWG



NO.	BY	DATE	REVISIONS

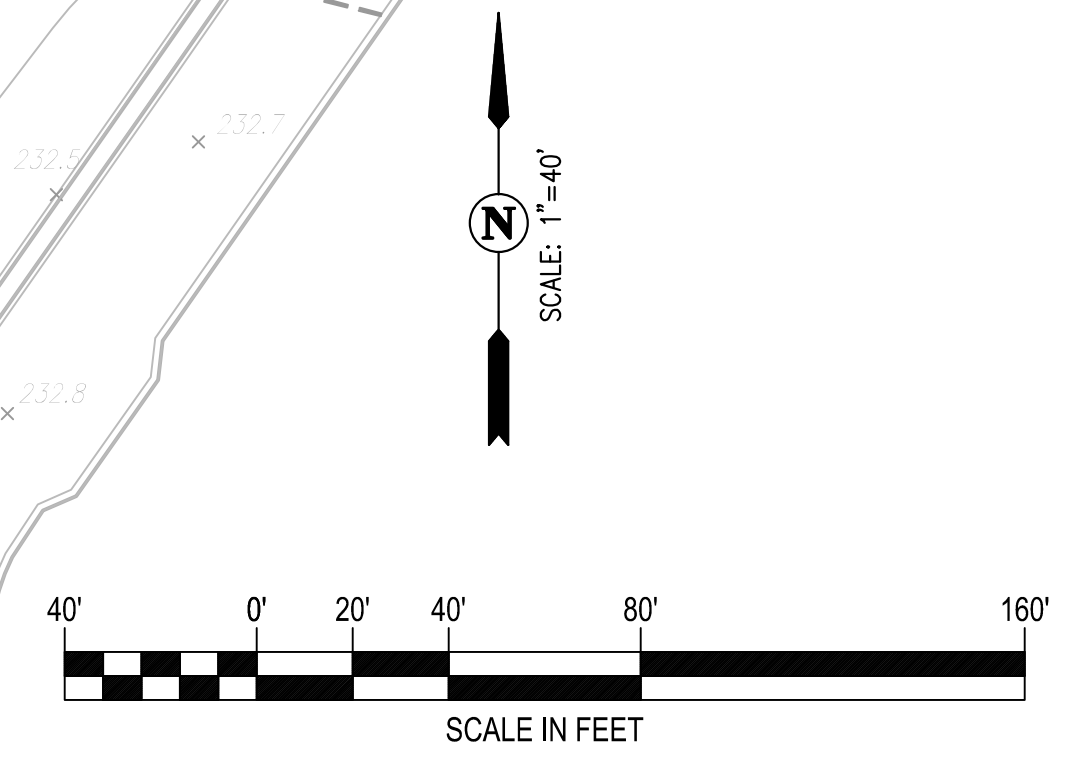
Carlson, Barbee & Gibson, Inc.
 CIVIL ENGINEERS • SURVEYORS • PLANNERS
 2653 Camino Ramon, Suite 350 • San Ramon, CA 94583
 925-866-0322
 www.cbgi.com



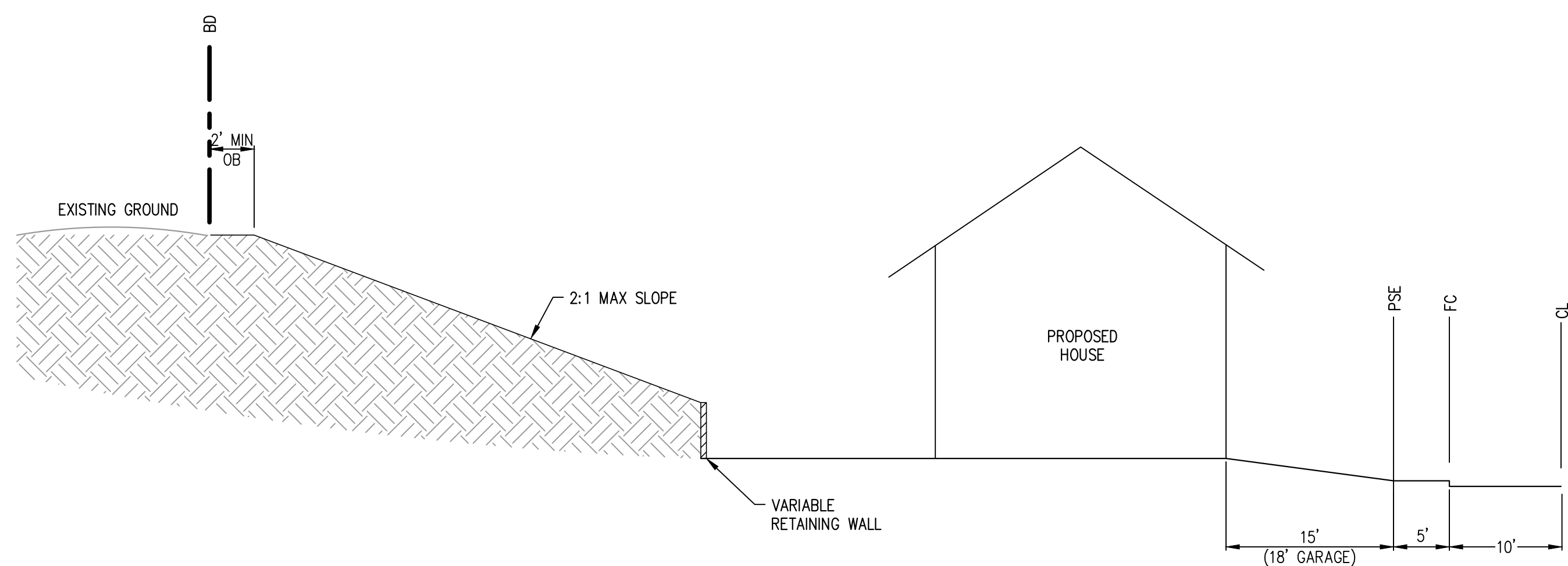
GRADING PLAN
BOUNDARY CREEK
 TRACT 7530

CALIFORNIA
 CASTRO VALLEY

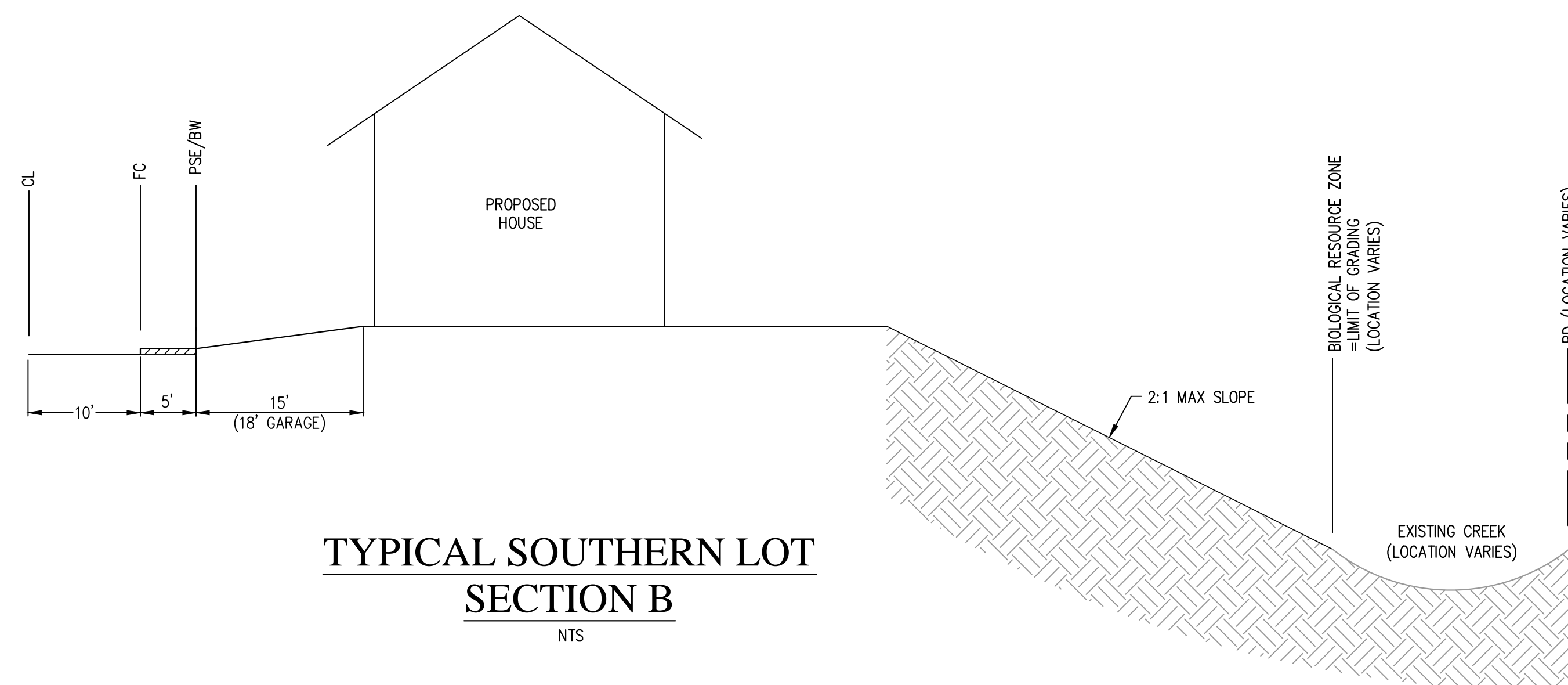
DESIGNED:	STAFF
DRAWN:	M.K.A.
CHECKED:	L.J.R.
SCALE:	1"=40'
SHEET NO.	4 OF 6
JOB NO.	1922-050



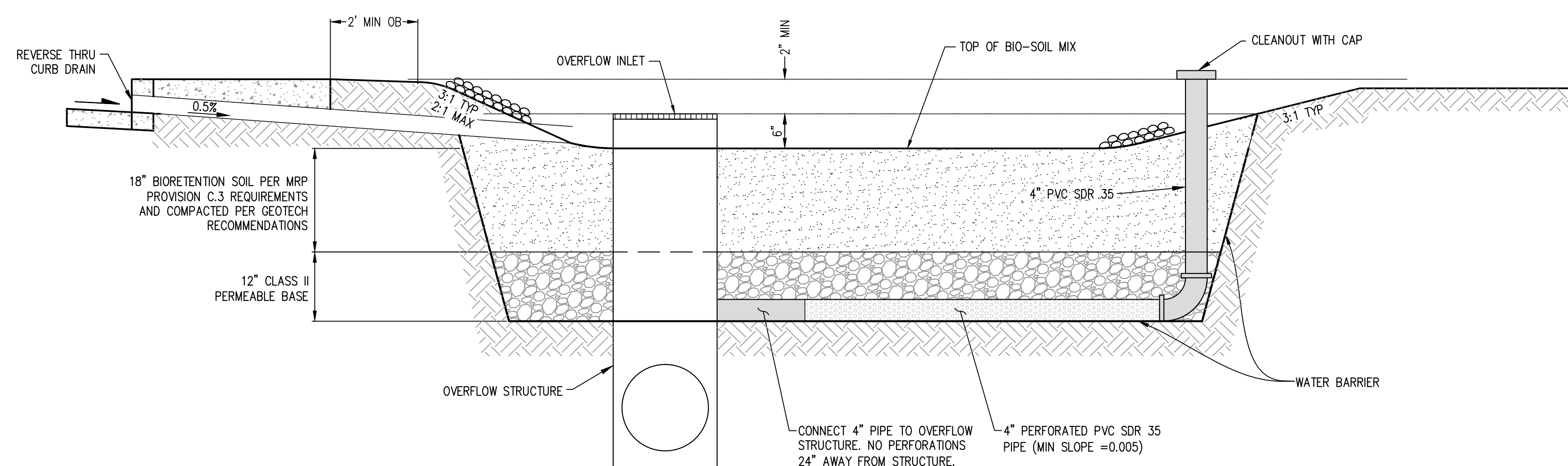
G:\1922-050\ACAD\TM - CONFORMANCE\TM 4.DWG 10/21/05 9:32 AM



**TYPICAL NORTHERN LOT
SECTION A**
NTS



**TYPICAL SOUTHERN LOT
SECTION B**
NTS



**TYPICAL BIORETENTION AREA
(CLEAN WATER BASIN) - SECTION C**
NTS

* ALL BIORETENTION TO CONFORM TO CURRENT NPDES REQUIREMENTS AND REGULATIONS.

NO.	BY	DATE	REVISIONS	APPROVAL

Carlson, Barbee & Gibson, Inc.
CIVIL ENGINEERS • SURVEYORS • PLANNERS

2653 Camino Ramon, Suite 350 • San Ramon, CA 94583
925-866-0322
www.cbgi.com

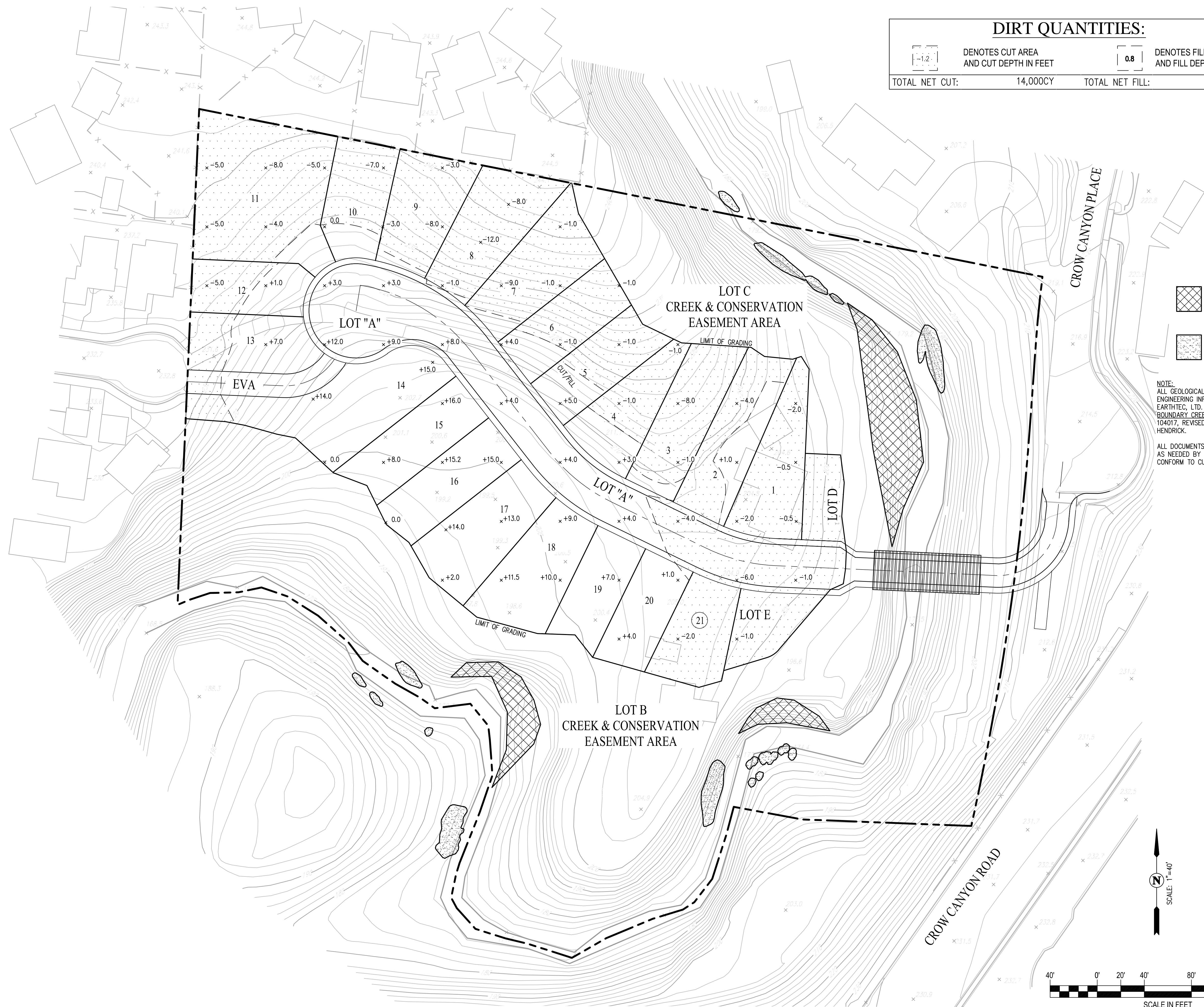
cbg



CROSS SECTIONS AND DETAILS
BOUNDARY CREEK
TRACT 7530

CALIFORNIA
CASTRO VALLEY

DESIGNED:	STAFF
DRAWN:	M.K.A.
CHECKED:	L.J.R.
SCALE:	NTS
SHEET NO.	5 OF 6
JOB NO.	1922-050



- SURFICIAL SLIDE
- SANDSTONE

NOTE:
ALL GEOLOGICAL AND GEOTECHNICAL
ENGINEERING INFORMATION ADAPTED FROM
EARTHTEC, LTD. FINAL GEOTECHNICAL STUDY,
BOUNDARY CREEK PROJECT REPORT NO.
104017, REVISED -2-14-2005. REVIEWED BY ED
HENDRICK.

ALL DOCUMENTS TO BE UPDATED AND REVIEWED
AS NEEDED BY STEVENS, FERRONE & BAILEY TO
CONFORM TO CURRENT STANDARDS.

APPROVAL	
REVISIONS	
NO.	BY DATE

Carlson, Barbee & Gibson, Inc.
CIVIL ENGINEERS • SURVEYORS • PLANNERS
2653 Camino Ramon, Suite 350 • San Ramon, CA 94583
925-866-0322
www.cbgi.com



DIRT DISTRIBUTION PLAN
BOUNDARY CREEK
TRACT 7530
CALIFORNIA
CASTRO VALLEY

DESIGNED:	STAFF
DRAWN:	M.K.A.
CHECKED:	L.J.R.
SCALE:	1"=40'
SHEET NO.	6 OF 6
JOB NO.	1922-050

G:\1922-050\ACAD\TM - CONFORMANCETM.DWG 10/26/05 9:52 AM