

Figure Solar-3a CLN Vegetation Rarity in unincorporated RM, WM, and LPA designations

Alameda County Community Development Agency
DRAFT November 2020

Legend

- Incorporated Cities
- Public Open Space
- Vegetation rarity ranking**
 - 1- Globally unique
 - 2- Locally rare
 - 3- Locally and globally common

NOTE:

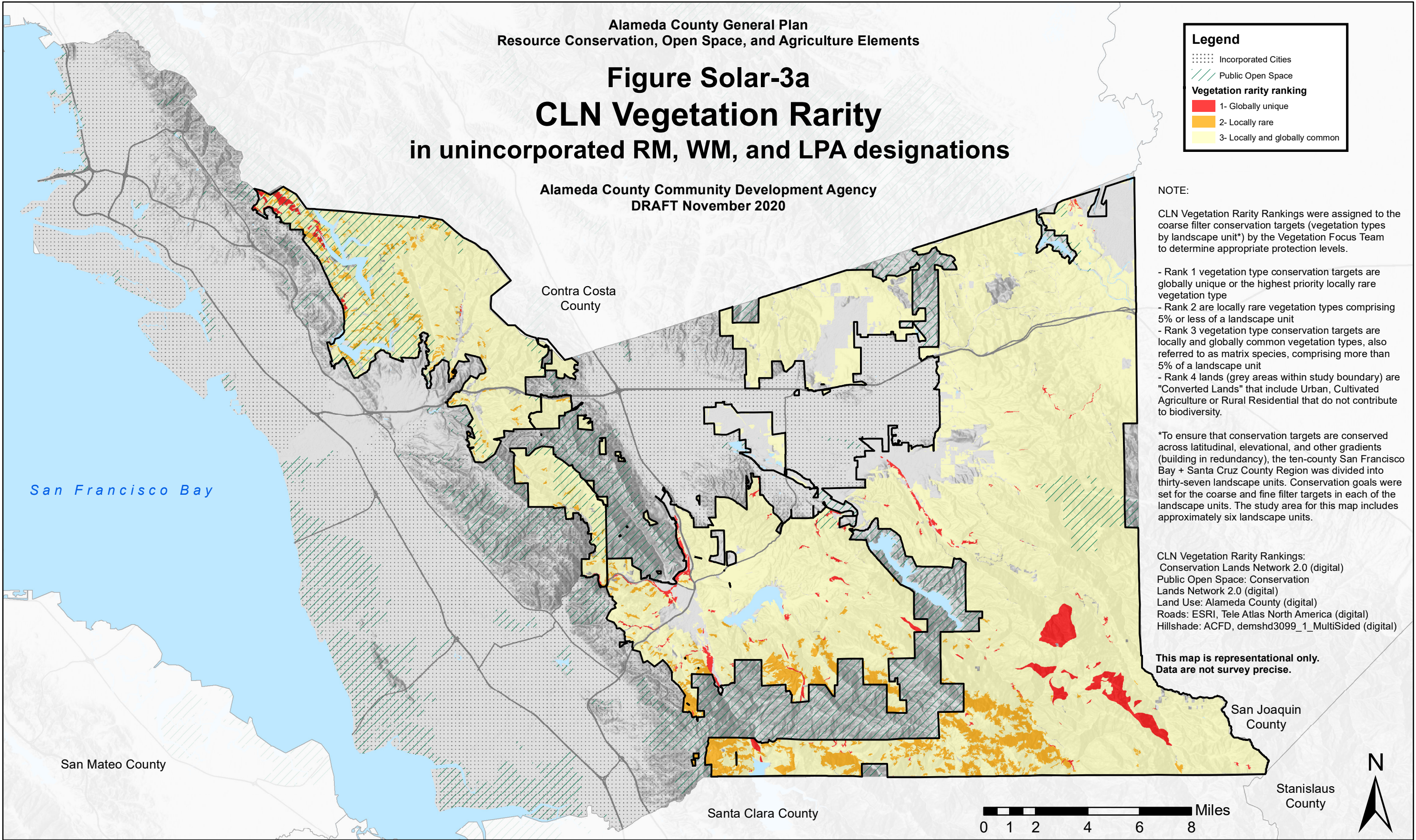
CLN Vegetation Rarity Rankings were assigned to the coarse filter conservation targets (vegetation types by landscape unit*) by the Vegetation Focus Team to determine appropriate protection levels.

- Rank 1 vegetation type conservation targets are globally unique or the highest priority locally rare vegetation type
- Rank 2 are locally rare vegetation types comprising 5% or less of a landscape unit
- Rank 3 vegetation type conservation targets are locally and globally common vegetation types, also referred to as matrix species, comprising more than 5% of a landscape unit
- Rank 4 lands (grey areas within study boundary) are "Converted Lands" that include Urban, Cultivated Agriculture or Rural Residential that do not contribute to biodiversity.

*To ensure that conservation targets are conserved across latitudinal, elevational, and other gradients (building in redundancy), the ten-county San Francisco Bay + Santa Cruz County Region was divided into thirty-seven landscape units. Conservation goals were set for the coarse and fine filter targets in each of the landscape units. The study area for this map includes approximately six landscape units.

CLN Vegetation Rarity Rankings:
Conservation Lands Network 2.0 (digital)
Public Open Space: Conservation Lands Network 2.0 (digital)
Land Use: Alameda County (digital)
Roads: ESRI, Tele Atlas North America (digital)
Hillshade: ACFD, demshd3099_1_MultiSided (digital)

**This map is representational only.
Data are not survey precise.**



San Francisco Bay

Contra Costa County

San Mateo County

Santa Clara County

San Joaquin County

Stanislaus County

