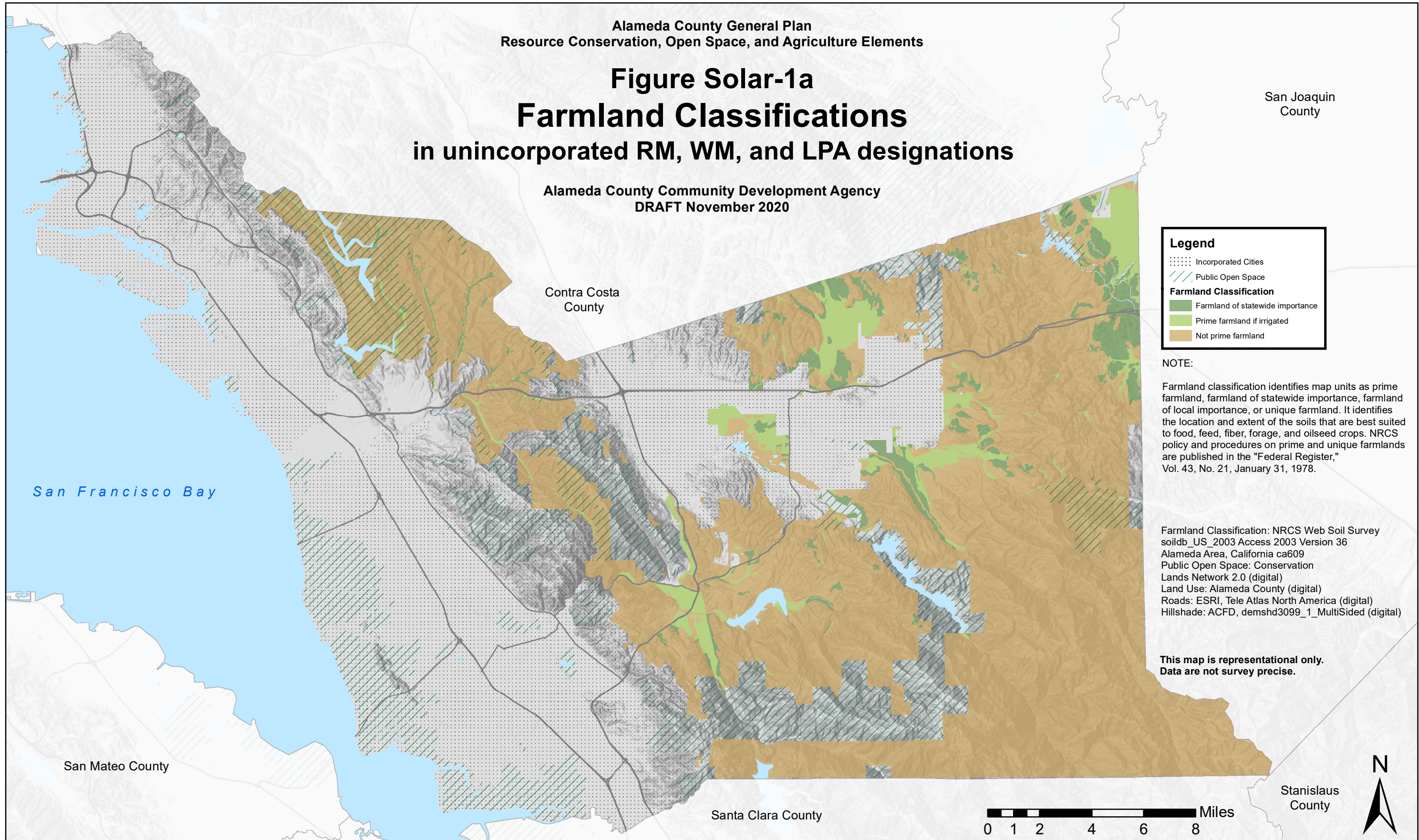


Figure Solar-1a Farmland Classifications in unincorporated RM, WM, and LPA designations

Alameda County Community Development Agency
DRAFT November 2020



San Joaquin
County

Contra Costa
County

San Francisco Bay

San Mateo County

Santa Clara County

Stanislaus
County

Legend

- Incorporated Cities
- Public Open Space
- Farmland Classification**
 - Farmland of statewide importance
 - Prime farmland if irrigated
 - Not prime farmland

NOTE:
Farmland classification identifies map units as prime farmland, farmland of statewide importance, farmland of local importance, or unique farmland. It identifies the location and extent of the soils that are best suited to food, feed, fiber, forage, and oilseed crops. NRCS policy and procedures on prime and unique farmlands are published in the "Federal Register," Vol. 43, No. 21, January 31, 1978.

Farmland Classification: NRCS Web Soil Survey soildb_US_2003 Access 2003 Version 36
Alameda Area, California ca609
Public Open Space: Conservation Lands Network 2.0 (digital)
Land Use: Alameda County (digital)
Roads: ESRI, Tele Atlas North America (digital)
Hillshade: ACFD, demshd3099_1_MultiSided (digital)

**This map is representational only.
Data are not survey precise.**

0 1 2 4 6 8 Miles

