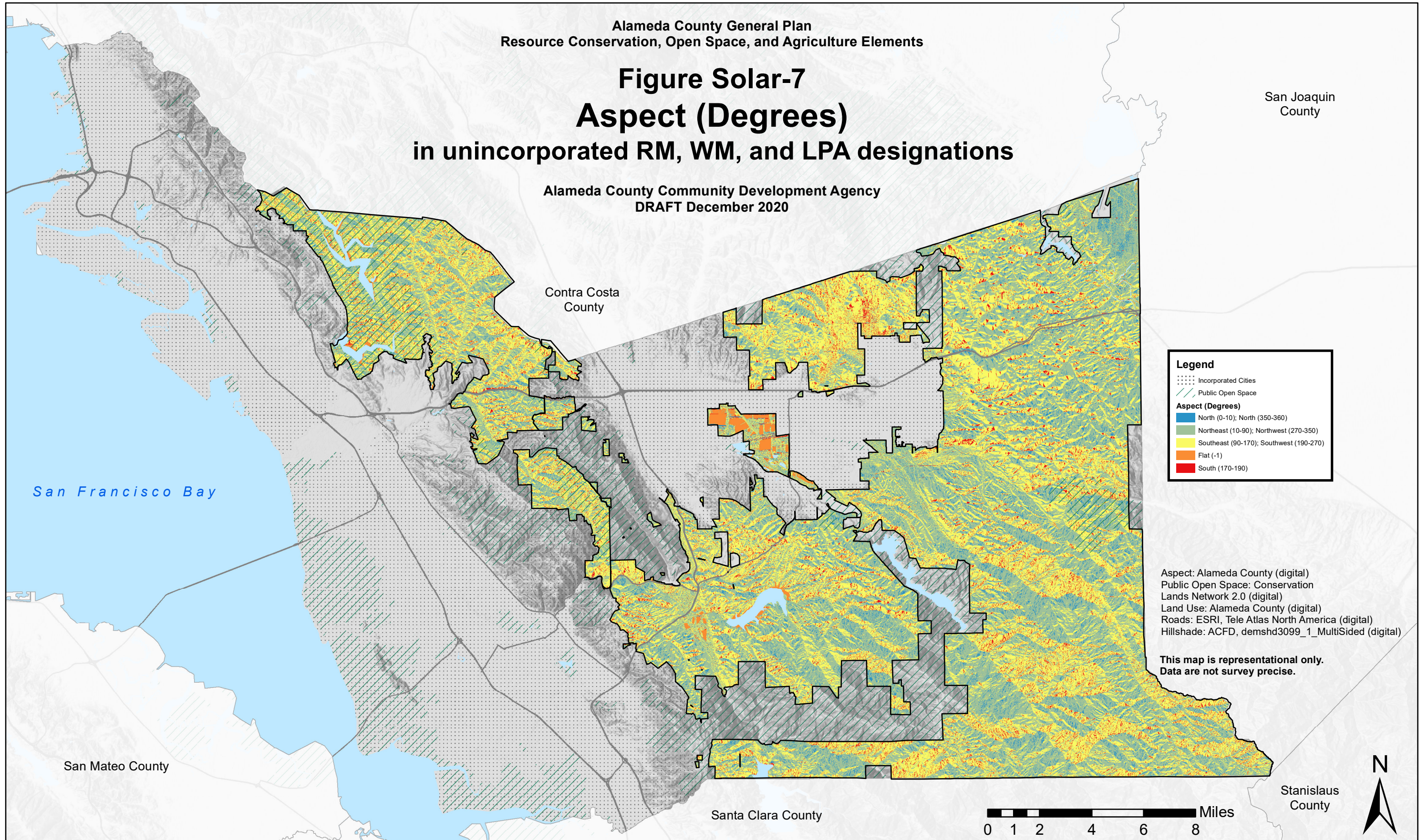


Alameda County General Plan
Resource Conservation, Open Space, and Agriculture Elements

Figure Solar-7 Aspect (Degrees) in unincorporated RM, WM, and LPA designations

Alameda County Community Development Agency
DRAFT December 2020



Legend

- Incorporated Cities
- Public Open Space

Aspect (Degrees)

- North (0-10); North (350-360)
- Northeast (10-90); Northwest (270-350)
- Southeast (90-170); Southwest (190-270)
- Flat (-1)
- South (170-190)

Aspect: Alameda County (digital)
Public Open Space: Conservation Lands Network 2.0 (digital)
Land Use: Alameda County (digital)
Roads: ESRI, Tele Atlas North America (digital)
Hillshade: ACFD, demshd3099_1_MultiSided (digital)

**This map is representational only.
Data are not survey precise.**

0 1 2 4 6 8 Miles

