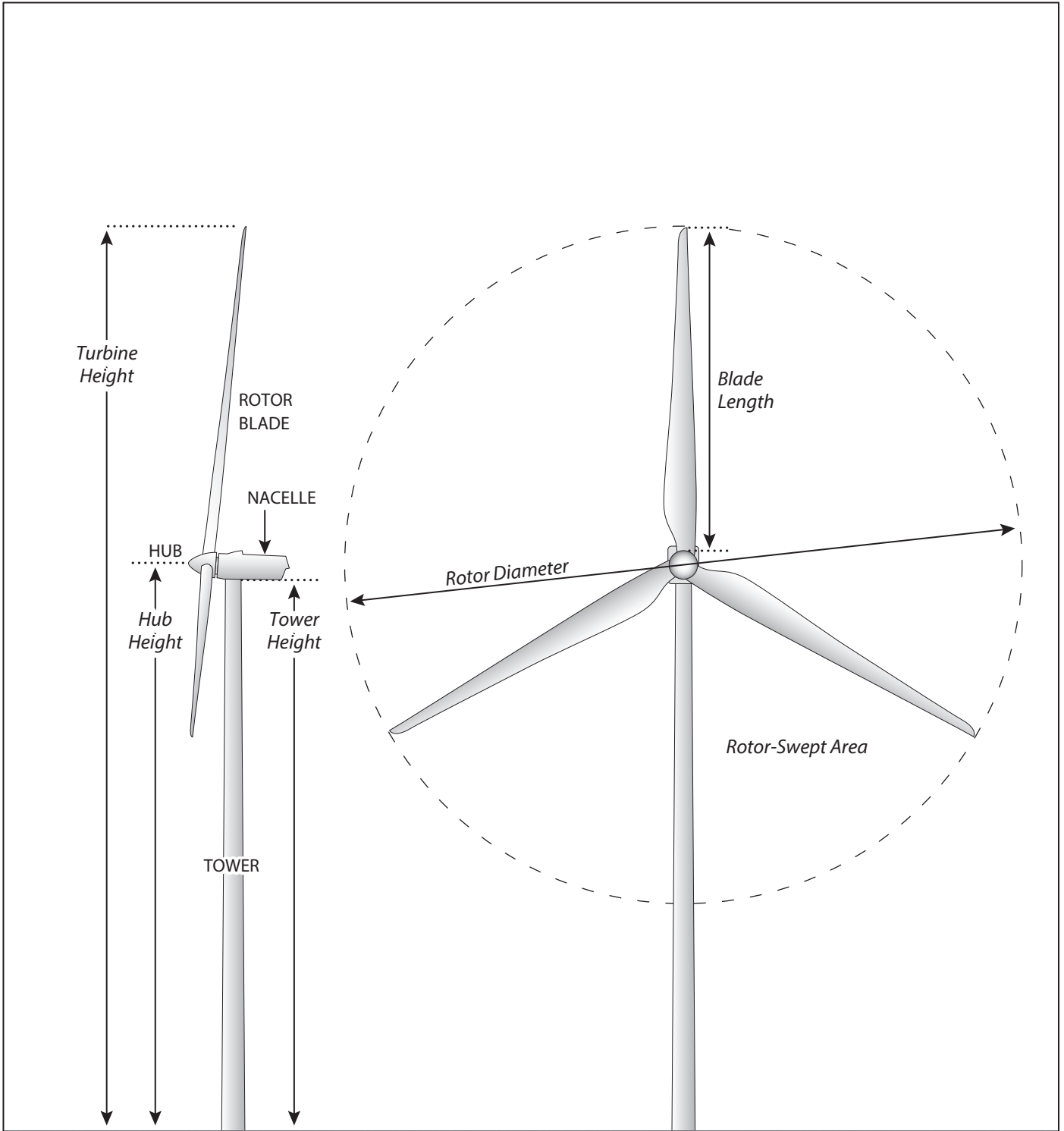


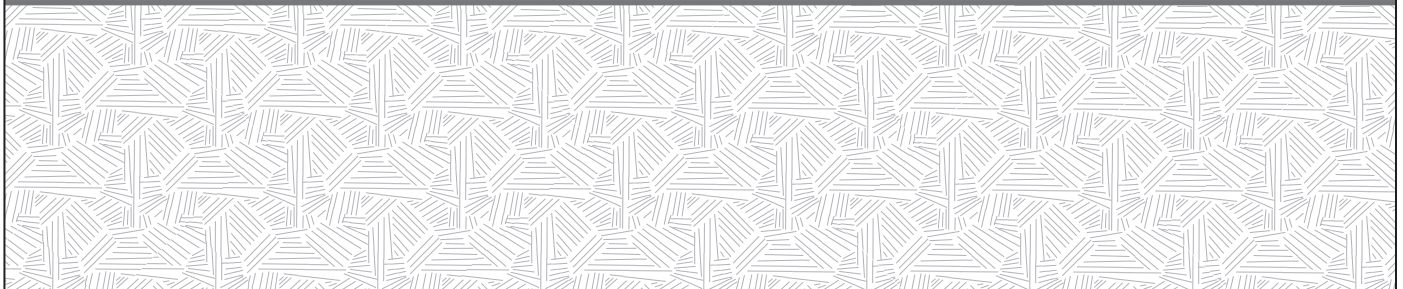
Graphics: 00323.08 PEIR (7-26-2013)

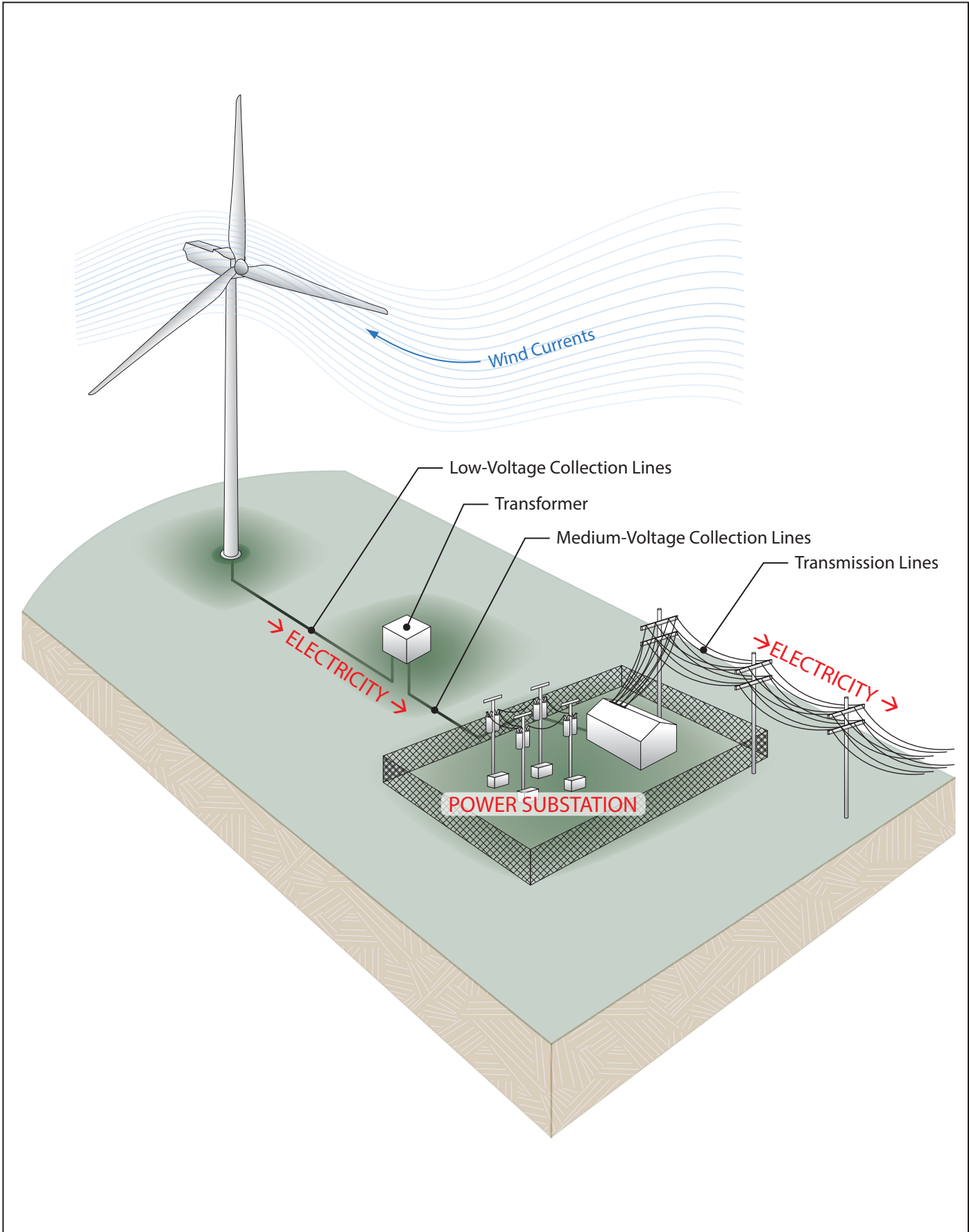


Figure 2-1
Overview of Wind Turbine Components



Graphics...00323.08 PEIR (7-26-2013)





Graphics...00323.08 PEIR (5-2013)



Down Tower Cabinet



Pier Foundation

Pier Foundation for Lattice Tower

Down Tower Cabinet



Spread Footing Foundation

Spread Footing Foundation for Lattice Tower



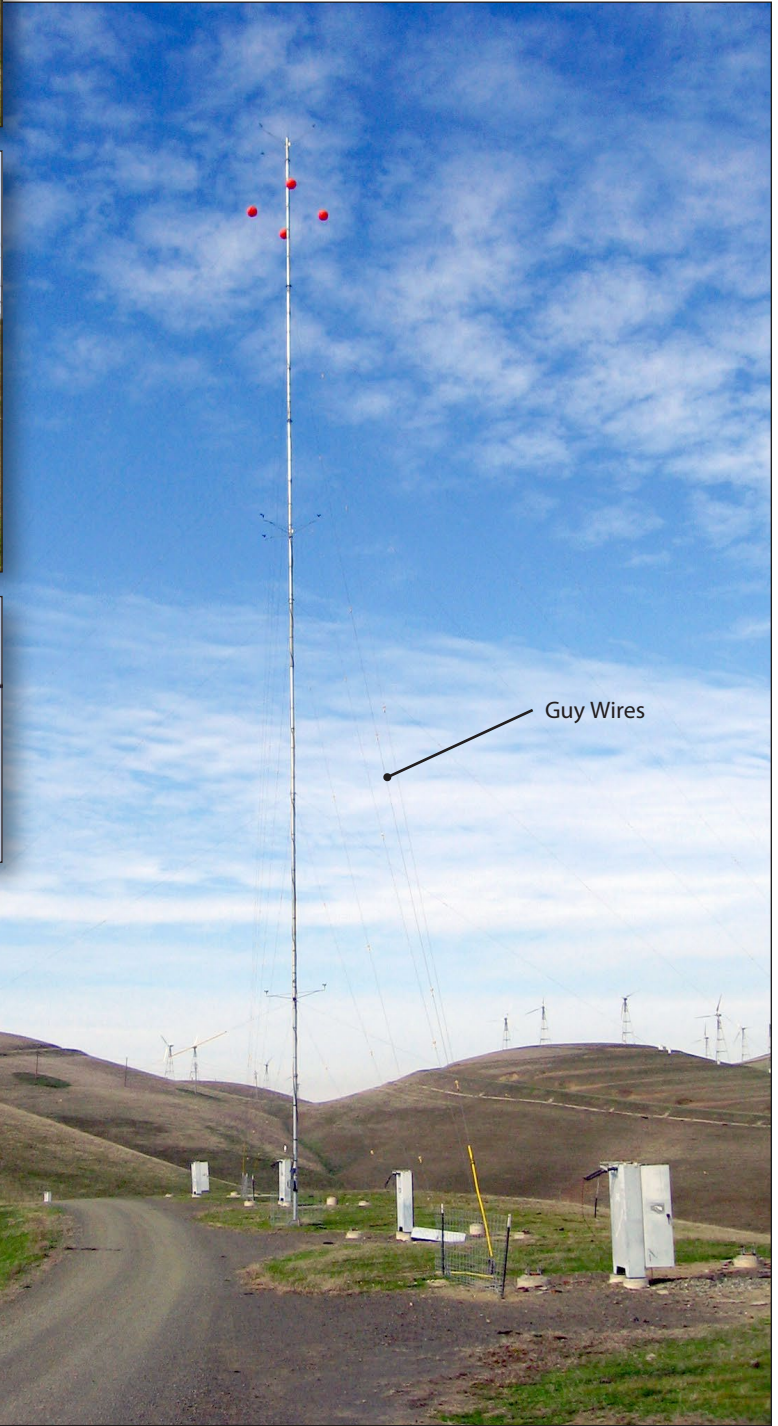
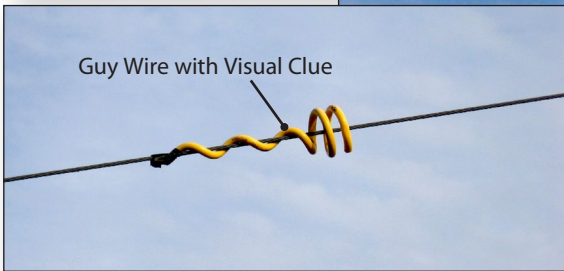
Spread Footing Foundation for Tubular Tower
(Down Tower Cabinet inside Tower)



Base of Diablo Winds Vestas V47 Turbine
(Pier Foundation)

Graphics...00323.08 PEIR (7-26-2013)





Graphics...00323.08 PEIR (7-26-2013)



Figure 2-5
Temporary Meteorological Tower with Guy Wires

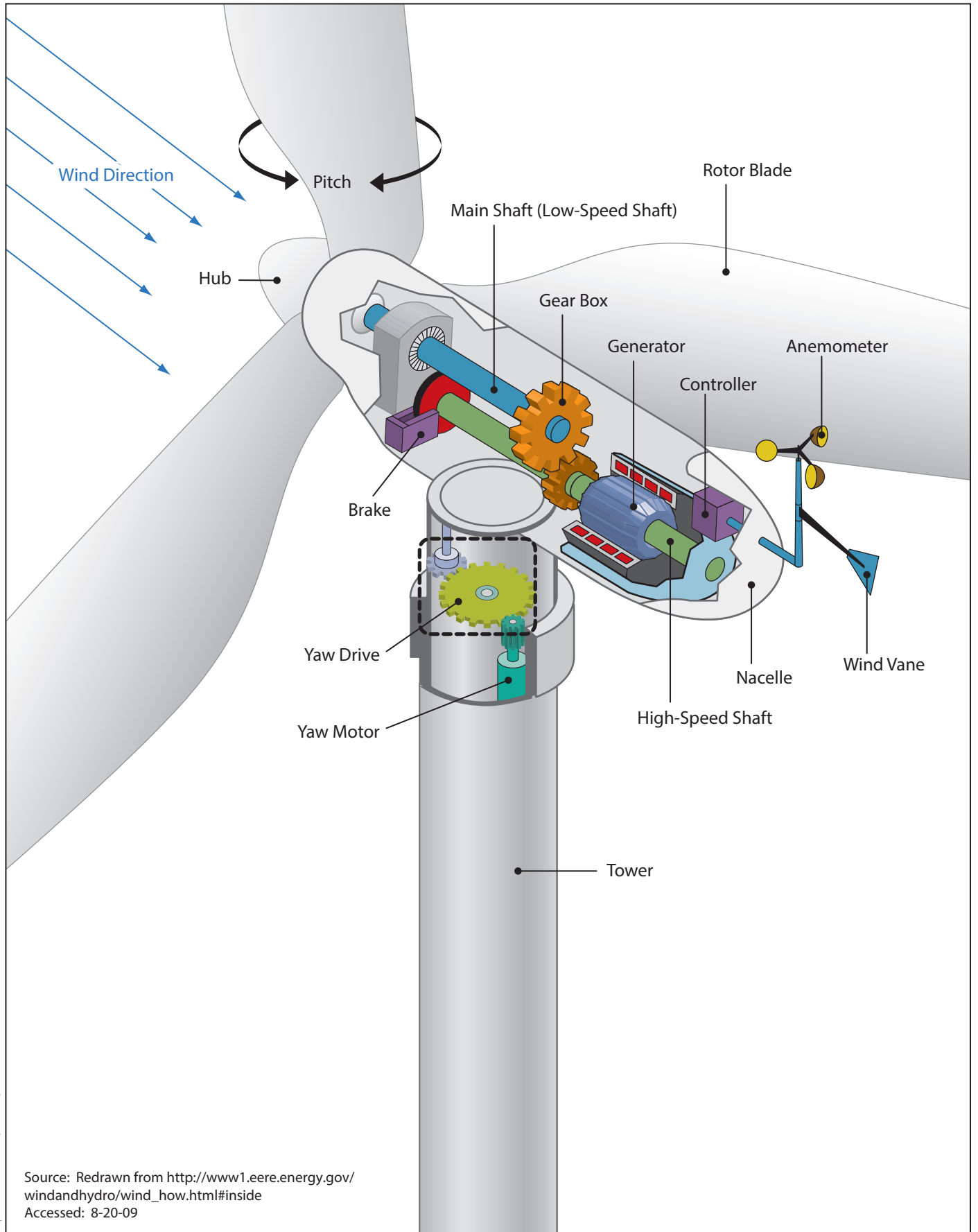


Graphics...00323.08 PEIR (7-26-2013)



Altamont Pass Wind Resource Area
Repowering Program

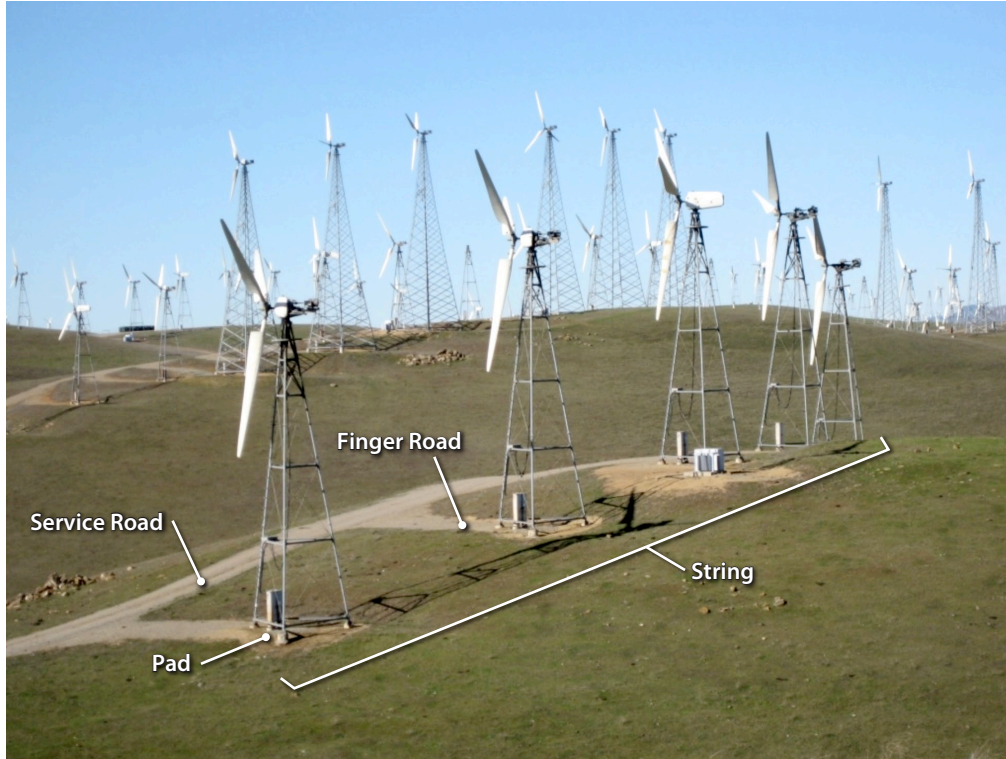
Figure 2-6
Free-Standing Permanent Meteorological Tower



Source: Redrawn from http://www1.eere.energy.gov/windandhydro/wind_how.html#inside
 Accessed: 8-20-09

Graphics: 00323.08 PEIR (7-26-2013)





Overhead View

Graphics...00323.08 PEIR (7-26-2013)



In flat areas, the foundation is broken up and buried in a hole adjacent to foundation. The area is then graded and seeded.



Excavation of hole adjacent to foundation



Breaking up the foundation



Graded area is ready for seeding

On high slope areas the foundations are covered with at least 3 feet of topsoil. The area is then graded and seeded.



Foundation location on high slope area



Dirt is moved from the lower bank to fill in the turbine pad area and foundation

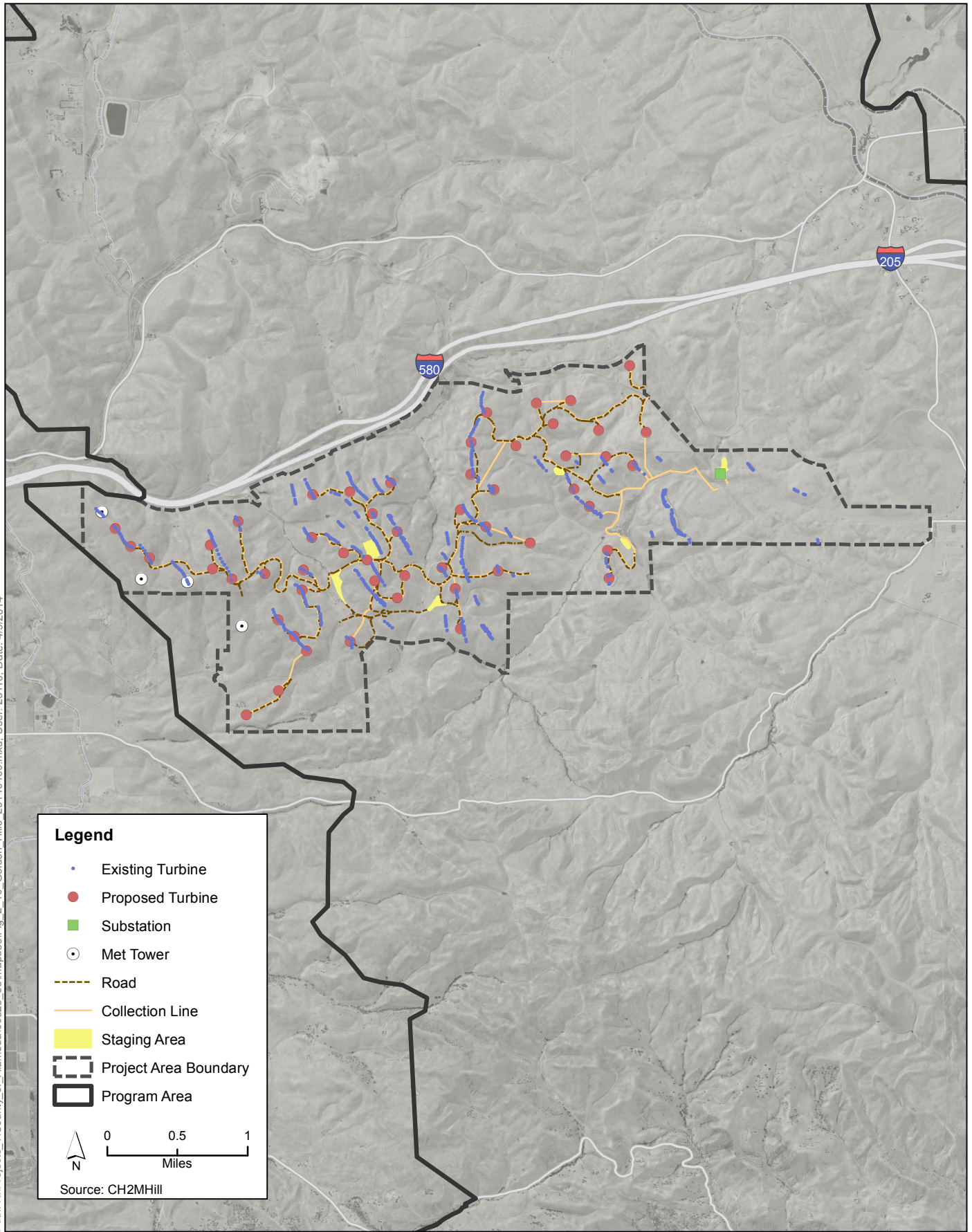


Area has been graded and seeded

Graphics...00323.08 (7-26-2013)



Path: K:\Projects_1\County_of_Alameda\00323_08\mapdoc\Fig_2_10_Golden_Hills_20140409.mxd; User: 25110; Date: 4/9/2014



Path: K:\Projects_1\County_of_Alameda\00323_06\mapdoc\Fig_2_11_Patterson_Pass_20140213.mxd; User: 25110; Date: 2/20/2014

